

551H003709 ATTRACTION-RED

Reg: HO840003147207032
RHA: 99%

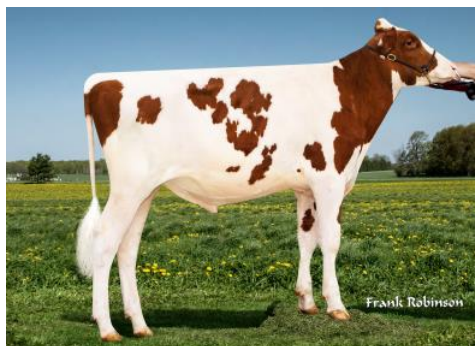
DOB: 09/25/2017
aAa: 321 HHC HHR AA A1A2

04/2019 CDCB SUMMARY - GENOMIC			NM\$ +252
Milk	-267	79%R	Fluid Merit \$ +159
Fat	+17	+0.10%	Cheese Merit \$ +294
Protein	+18	+0.10%	Grazing Merit \$ +263
SCS	2.98	77%R	Gestation Len. +0 Fert. Index +0.9
PL	+0.7	75%R	Livability -1.5 71% Rel
DPR	+0.8	75%R	EFI 6.5% gEFI 8.7% gIB 11.5%
HCR	+1.8		
CCR	+0.2		0 Dtrs 0 Herds 100% US

04/2019 CALVING SUMMARY			SCE 8.4 %
Sire Calving Ease	8.4%	62%R	0 Obs
Daughter Calving Ease	5.1%	58%R	0 Obs
Sire Stillbirth	9.1%	57%R	0 Obs
Daughter Stillbirth	5.8%	56%R	0 Obs

04/2019 HA TYPE SUMMARY			TPI +2209
PTAT +3.40	78%R	UDC+3.10 FLC+2.88 BSC +1.52 0 D / 0 H	
		-2 -1 0 1 2	
Stature	+2.93	Tall	
Strength	+1.67	Strong	
Body Depth	+1.98	Deep	
Dairy Form	+2.05	Open Rib	
Rump Angle	+0.40	Sloped	
Thurl Width	+2.66	Wide	
Rear Legs-Side View	-0.99	Posty	
Rear Legs-Rear View	+3.17	Straight	
Foot Angle	+3.33	Steep	
Feet & Legs Score	+3.20	High	
F. Udder Attachment	+3.57	Strong	
Rear Udder Height	+4.91	High	
Rear Udder Width	+4.52	Wide	
Udder Cleft	+2.27	Strong	
Udder Depth	+2.38	Shallow	
Front Teat Placement	+2.24	Close	
Rear Teat Placement	+2.45	Close	
Teat Length	-1.03	Short	

Apple-Pts Attraction-Red-ET CV TC
Imac*RC x Regiment-Red x Durham



Sire: Farnear Apples Imac*RC-ET RC TL TV TD
Dam: KHW Regiment Apple-Red-ET CV EX-96 3E DOM
09-01 2x 365d 36750m 4.3 1582f 3.3 1211p
MGS: Carrousel Regiment-RED-ET TV TL
MGD: Kamps-Hollow Altitude-ET RC CV TL EX-95 2E DOM
07-00 2x 365d 39690m 4.7 1849f 3.3 1310p
MGGS: Regancrest Elton Durham-ET TR CV TL EX-90
MGGD: Clover-Mist Alisha-ET RC EX-93 3E DOM
08-07 2x 365d 36920m 4.2 1553f 3.2 1188p



Dam: KHW Regiment Apple-Red-ET

Sexed **ULTRA 4+**

EcoFeed 103 - Rel. 28%



MGD: Kamps-Hollow Altitude-ET



MGGD: Clover-Mist Alisha-ET