

734HO00091 YOLO

Reg: HO840003145398965
RHA: 100%

DOB: 07/16/2017

04/2019 CDCB SUMMARY - GENOMIC			NM\$ +850
Milk	+1076	80%R	Fluid Merit \$ +801
Fat	+84	+0.16%	Cheese Merit \$ +874
Protein	+44	+0.04%	Grazing Merit \$ +807
SCS	2.76	78%R	Gestation Len. +0 Fert. Index +2.5
PL	+6.3	75%R	Livability +2.6 69% Rel
DPR	+1.7	74%R	EFI 8.1% gEFI 9.6% gIB 13.2%
HCR	+4.0		
CCR	+3.6		0 Dtrs 0 Herds 100% US

04/2019 CALVING SUMMARY			SCE 7.6 %
Sire Calving Ease	7.6%	64%R	0 Obs
Daughter Calving Ease	4.1%	62%R	0 Obs
Sire Stillbirth	6.7%	61%R	0 Obs
Daughter Stillbirth	4.2%	61%R	0 Obs

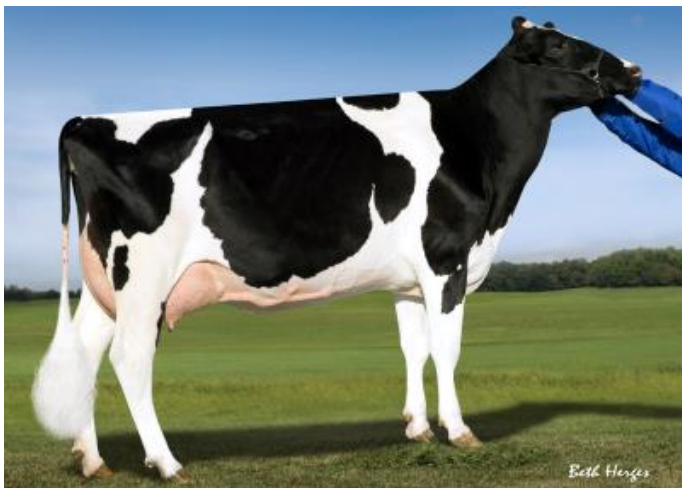
04/2019 HA TYPE SUMMARY			TPI +2742
PTAT +2.65	79%R	UDC+3.23 FLC+0.78 BSC +0.03 0 D / 0 H	
Stature	+0.94	Tall	
Strength	+0.11	Strong	
Body Depth	+0.13	Deep	
Dairy Form	+1.18	Open Rib	
Rump Angle	+0.30	Sloped	
Thurl Width	+1.64	Wide	
Rear Legs-Side View	+0.51	Sickle	
Rear Legs-Rear View	+0.60	Straight	
Foot Angle	+0.47	Steep	
Feet & Legs Score	+1.03	High	
F. Udder Attachment	+3.51	Strong	
Rear Udder Height	+4.06	High	
Rear Udder Width	+3.74	Wide	
Udder Cleft	+2.06	Strong	
Udder Depth	+2.91	Shallow	
Front Teat Placement	+2.41	Close	
Rear Teat Placement	+2.60	Close	
Teat Length	-1.48	Short	

Bgp Yolo-ET TR TC TP
Bandares x Meridian x Robust

Sire: Wa-Del Yoder Bandares-ET
Dam: View-Home Mrdian Iowa-ET VG-86
02-02 3x 365d 35670m 3.8 1342f 3.1 1099p
MGS: Sully Hart Meridian-ET TY TD
MGD: Pine-Tree 2149Robst 4846-ET VG-86
02-04 3x 365d 32000m 4.8 1520f 3.2 1036p
MGGS: Roylane Socra Robust-ET TR TV TL TD
MGGD: Pine-Tree Zenith Sheen VG-87 DOM
01-11 3x 305d 24500m 3.9 959f 3.0 740p



Dam: View-Home Mrdian Iowa-ET



MGD: Pine-Tree 2149Robst 4846-ET



MGGD: Pine-Tree Zenith Sheen