

JARED 7H013907

HO840003127565651

CLEAR-ECHO JEDI JARED 745-ET TR TP TC TY TV TL TD HH5C HH1T HH2T HH3T HH4T HH6T

JEDI X KINGBOY X SUPERSIRE

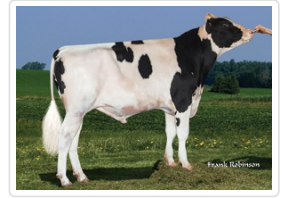
Born On: June 25, 2016

Beta-casein: A1A2 Kappa-casein: AB EFI: 8.6% aAa: 423

Sire: S-S-I MONTROSS JEDI-ET

Dam: CLEAR-ECHO KINGBOY 3319-ET EX-90

3-04 3X 281D 12388 kgM 4.3% 527 kgF 3.0% 376 kgP



SEXED ULTRA

FORCE



DAM Clear-Echo Kingboy 3319-ET

INDEXES

TPI	2701
NM\$	805
CM\$	834
Feed Efficiency (\$)	158
DWP\$	783
WT\$	-55
CW\$	-4

PRODUCTION

PTA Milk (lbs)	1488
PTA Protein (lbs)	59
PTA Protein (%)	0.05
PTA Fat (lbs)	62
PTA Fat (%)	0.02
Production Reliability %	80
Dtrs/Herds	0/0

TYPE

PTA Type	1.73
Udder Composite	1.99
Feet & Leg Composite	0.27
Body Weight Composite	0.67
Dairy Composite	0.73
Type Reliability %	80
Dtrs/Herds	0/0

WELLNESS TRAITS

CDCB ZOETIS

Mastitis/Rel.%	-0.2/68	90/55
Lameness/Rel.%		102/54
Retained Placenta/Rel.%	0.3/59	99/55
Ketosis/Rel.%	0.4/56	106/54
Metritis/Rel.%	1.1/60	106/55
Displaced Abomasum/Rel.%	0.5/58	93/52
Hypocalcemia/Milk	-0.2/45	
Fever/Rel. %		
Calf Respiratory/Rel. %		100/47
Calf Scours/Rel. %		100/50
Calf Livability/Rel. %		102/50

DAUGHTER FERTILITY

Fertility Index	4.2
DPR/Rel.%	4.2/78
HCR/Rel.%	1.8/74
CCR/Rel.%	6.6/77

SIRE FERTILITY

SCR/Rel %	1.4/62
-----------	--------

MANAGEMENT TRAITS

SCE/Rel %	6.7/91
DCE/Rel.%	2.7/68
Gestation Length/Rel.%	-2.5/75
Early First Calving/Rel.%	4.8/71
DSB/Rel.%	3.4/64
SSB/Rel.%	7.4/82
Productive Life/Rel.%	7.0/76
Livability/Rel.%	1.2/71
SCS/Rel.%	2.71/78
Milking Speed/Rel.%	0/0

Stature	Short		0.98	Tall
Strength	Frail		0.78	Strong
Body Depth	Shallow		0.33	Deep
Dairy Form	Tight Ribbed		0.28	Open Ribbed
Rump Width	Narrow		-0.09	Wide
Rump Angle	High Pins		-0.11	Sloped
Rear Leg (side view)	Posty		-2.11	Sickled
Rear Leg (rear view)	Hock-in		-0.15	Straight
Foot Angle	Low Angle		1.71	Steep Angle
Feet & Leg Score	Low		0.43	High
Fore Udder	Loose		2.54	Strong
Rear Udder Height	Low		2.58	High
Rear Udder Width	Narrow		2.37	Wide
Udder Cleft	Weak		0.77	Strong
Udder Depth	Deep		1.91	Shallow
Front Teat Placement	Wide		0.93	Close
Rear Teat Placement	Wide		0.51	Close
Teat Length	Short		0.32	Long