

551H003688 UPGRADE

Reg: HO840003146864323
RHA: 99%

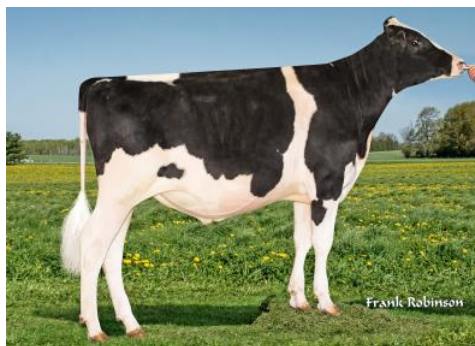
DOB: 10/21/2017
aAa: 213 HH5 AB A2A2

| 04/2019 | CDCB SUMMARY - GENOMIC | | | NM\$ +193 |
|---------|------------------------|--------|-------------------|---------------------|
| Milk | -484 | 80%R | Fluid Merit \$ | +110 |
| Fat | +16 | +0.13% | Cheese Merit \$ | +233 |
| Protein | +6 | +0.08% | Grazing Merit \$ | +183 |
| SCS | 2.67 | 79%R | Gestation Len. +1 | Fert. Index +0.4 |
| PL | +2.1 | 75%R | Livability -2.8 | 67% Rel |
| DPR | +0.2 | 75%R | EFI 7.8% | gEFI 9.6% gIB 15.8% |
| HCR | +1.6 | | | |
| CCR | -0.3 | | 0 Dtrs 0 Herds | 100% US |

| 04/2019 | CALVING SUMMARY | | | SCE 9.2 % |
|-----------------------|-----------------|------|--|-----------|
| Sire Calving Ease | 9.2% | 63%R | | 0 Obs |
| Daughter Calving Ease | 7.5% | 60%R | | 0 Obs |
| Sire Stillbirth | 8.8% | 61%R | | 0 Obs |
| Daughter Stillbirth | 8.3% | 59%R | | 0 Obs |

| 04/2019 | HA TYPE SUMMARY | | | | TPI +2165 |
|----------------------|-----------------|-----------|----------|-----------|-------------|
| PTAT +4.53 | 80%R | UDC+3.06 | FLC+2.41 | BSC +2.23 | 0 D / 0 H |
| | | | | | -2 -1 0 1 2 |
| Stature | +3.97 | Tall | | | |
| Strength | +2.78 | Strong | | | |
| Body Depth | +3.30 | Deep | | | |
| Dairy Form | +3.24 | Open Rib | | | |
| Rump Angle | -1.61 | High Pins | | | |
| Thurl Width | +3.39 | Wide | | | |
| Rear Legs-Side View | +1.47 | Sickle | | | |
| Rear Legs-Rear View | +3.06 | Straight | | | |
| Foot Angle | +2.76 | Steep | | | |
| Feet & Legs Score | +2.99 | High | | | |
| F. Udder Attachment | +4.66 | Strong | | | |
| Rear Udder Height | +4.30 | High | | | |
| Rear Udder Width | +3.96 | Wide | | | |
| Udder Cleft | +2.40 | Strong | | | |
| Udder Depth | +3.38 | Shallow | | | |
| Front Teat Placement | +2.31 | Close | | | |
| Rear Teat Placement | +2.05 | Close | | | |
| Teat Length | +0.51 | Long | | | |

Our-Favorite Upgrade-ET TC TR Crush x Atwood x Shottle



Sire: Maverick Crush
Dam: Our-Favorite Unlimited EX-94
 02-08 3x 303d 27460m 4.5 1247f 3.2 888p
MGS: Maple-Downs-I G W Atwood TR TV TL TD EX-90
MGD: Our-Favorite Obvious-ET EX-91
 03-06 3x 365d 39340m 4.0 1577f 3.2 1270p
MGGS: Picston Shottle-ET TV TL TY EX-95
MGGD: Our-Favorite Outburst-ET EX-93
 04-03 3x 365d 45880m 3.9 1807f 3.1 1412p



Dam: Our-Favorite Unlimited EX-94

Sexed **ULTRA 4+**



Our-Favorite Unlimited EX-94