

551H003722 PONCHO

Reg: HO840003132353459
RHA: 99%

DOB: 10/11/2017
aAa: 243 EE A1A1

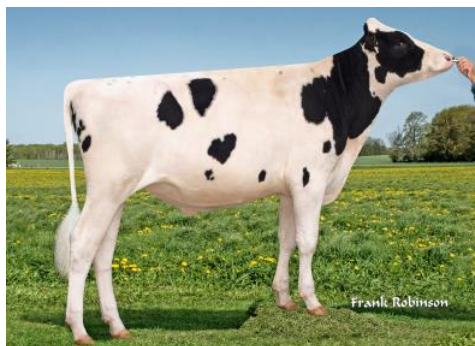
04/2019	CDCB SUMMARY - GENOMIC			NM\$ +949
Milk	+1624	77%R	Fluid Merit \$	+902
Fat	+75	+0.05%	Cheese Merit \$	+973
Protein	+58	+0.03%	Grazing Merit \$	+905
SCS	2.56	74%R	Gestation Len. -1	Fert. Index +3.1
PL	+8.2	72%R	Livability +4.0	66% Rel
DPR	+2.7	72%R	EFI 7.7%	gEFI 9.0% gIB 12.4%
HCR	+3.3			
CCR	+4.5		0 Dtrs 0 Herds	100% US

04/2019	CALVING SUMMARY			SCE 7.2 %
Sire Calving Ease	7.2%	57%R		0 Obs
Daughter Calving Ease	3.3%	55%R		0 Obs
Sire Stillbirth	7.9%	53%R		0 Obs
Daughter Stillbirth	3.0%	53%R		0 Obs

04/2019	HA TYPE SUMMARY				TPI +2843
PTAT +2.27	74%R	UDC+2.79	FLC+0.95	BSC +0.12	0 D / 0 H

Value	Category	Scale
+1.07	Tall	-2 to 2
+0.56	Strong	-2 to 2
+0.40	Deep	-2 to 2
+1.53	Open Rib	-2 to 2
+0.08	Sloped	-2 to 2
+0.92	Wide	-2 to 2
-0.82	Posty	-2 to 2
+1.14	Straight	-2 to 2
+0.73	Steep	-2 to 2
+1.09	High	-2 to 2
+2.80	Strong	-2 to 2
+4.25	High	-2 to 2
+3.91	Wide	-2 to 2
+0.90	Strong	-2 to 2
+1.82	Shallow	-2 to 2
+0.88	Close	-2 to 2
+0.55	Close	-2 to 2
-0.43	Short	-2 to 2

ST Gen Noble Poncho TC Noble x Profit x Rodgers



Sire: Mr Spring Noble-ET TL TV TD
Dam: HOUSA000074976316

MGS: S-S-I Partyrock Profit-ET
MGD: Melarry Rodgers Ada-ET VG-85

MGGS: De-Su Ltm Rodgers 11379-ET
MGGD: Teemar Sudan Alice-ET VG-86
02-02 2x 365d 34520m 4.1 1424f 3.1 1077p

Sexed **ULTRA 4+**

EcoFeed 103 - Rel. 43%

