

SELECT 7H014920

HO840003149135073

Born On: June 30, 2018
 Beta-casein: A1
 Kappa-casein: AE
 aAa: 423

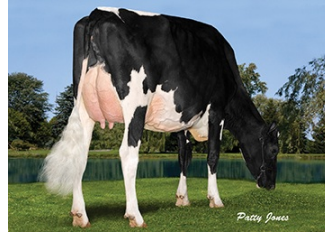


AVANT-GARDE UNIX SELECT-ET TR TP TC TY TV TL TD HH1T HH2T HH3T HH4T HH5T HH6T
 UNIX X MCCUTCHEN X LAVANGUARD

Sire: CROTEAU LESPERRON UNIX
 Dam: WALNUTLAWN MCCUTCHEN SUMMER-ET EX-94
 1-10 2X 365D 12248 kgM 4.6% 561 kgF 3.1% 380 kgP
 MGS: DE-SU BKM MCCUTCHEN 1174-ET



DAM Walnutlawn McCutchen Summer



MGD Misty-Springs Lavanguard Sue

INDEXES

TPI	2335
NM\$	143
CM\$	163
Feed Efficiency (%)	9
Feed Saved	-323
DWP\$	-78
WT\$	-54
CW\$	32

PRODUCTION

PTA Milk (lbs)	-410
PTA Protein (lbs)	-2
PTA Protein (%)	0.04
PTA Fat (lbs)	31
PTA Fat (%)	0.17
Production Reliability %	80
Dtrs/Herds	

TYPE

PTA Type	3.07
Udder Composite	2.61
Feet & Leg Composite	0.77
Body Weight Composite	2.53
Dairy Composite	2.19
Type Reliability %	79
Dtrs/Herds	

DAUGHTER FERTILITY

Fertility Index/Rel.%	-0.2
DPR/Rel.%	-0.6/77
HCR/Rel.%	-0.2/74
CCR/Rel.%	-1.6/76

MANAGEMENT TRAITS

SCE/Rel.%	2.1/92
DCE/Rel.%	2.2/69
Gestation Length/Rel.%	0.1/75
Early First Calving/Rel.%	4.2/73
SSB/Rel.%	5.3/85
DSB/Rel.%	5.8/63
Productive Life/Rel.%	-0.5/77
Livability/Rel.%	-1.9/73
SCS/Rel.%	2.83/79
Milking Speed/Rel.%	

CDCB/HA TYPE TRAITS

Trait	Value	Rel.%	Target
Stature	short	3.72	tall
Strength	frail	2.51	strong
Body Depth	shallow	2.64	deep
Dairy Form	tight ribbed	1.72	open ribbed
Rump Width	narrow	2.72	wide
Rump Angle	high pins	-0.02	sloped
Rear Leg (side view)	posty	0.24	sickled
Rear Leg (rear view)	hock-in	1.35	straight
Foot Angle	low angle	1.86	steep angle
Feet & Leg Score	low	1.51	high
Fore Udder	loose	3.86	strong
Rear Udder Height	low	3.41	high
Rear Udder Width	narrow	3.14	wide
Udder Cleft	weak	2.56	strong
Udder Depth	deep	3.57	shallow
Front Teat Placement	wide	1.97	close
Rear Teat Placement	wide	1.57	close
Teat Length	short	-0.85	long

SIRE FERTILITY

SCR/Rel.%	-0.6/94
-----------	---------

ZOETIS

WELLNESS TRAITS

CDCB

	Value	Rel.%		Value	Rel.%
	102	52	Mastitis	1.9	73
	101	53	Retained Placenta	-0.1	62
	95	52	Metritis	-0.1	63
	100	41	Hypocalcemia/Milk Fever	0.1	53
	101	49	Ketosis	0.5	59
	90	48	Displaced Abomasum	-0.4	61
	92	49	Lameness		
	101	45	Cow Respiratory Disease		
	96	41	Cow Abortion		
	105	49	Twinning		
	96	31	Cystic Ovary		
	N/A	N/A	Heifer Livability	1.00	56
	98	42	Calf Respiratory		
	108	42	Calf Scours		
	105	48	Calf Livability		