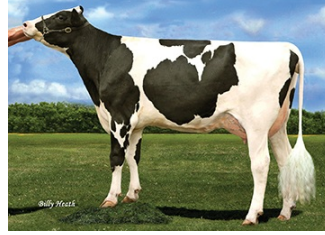


CHERRYPENCOL L LENNOX-ET TR TC TY TV TL TD HH1T HH2T HH3T HH4T HH5T HH6T

LEGACY X ROLAN X JEDI

Sire: PINE-TREE CW LEGACY-ET
 Dam: CHERRYPENCOL LEE-ET
 MGS: PROGENESIS MODEST ROLAN 512



MGD Cherry-Acres Jedi Lauri-ET

INDEXES

TPI	2984
NM\$	841
CM\$	898
Feed Efficiency (%)	237
Feed Saved	32
DWP\$	960
WT\$	65
CW\$	6

PRODUCTION

PTA Milk (lbs)	471
PTA Protein (lbs)	46
PTA Protein (%)	0.11
PTA Fat (lbs)	99
PTA Fat (%)	0.28
Production Reliability %	77
Dtrs/Herds	

TYPE

PTA Type	1.40
Udder Composite	1.96
Feet & Leg Composite	0.22
Body Weight Composite	-0.54
Dairy Composite	-0.40
Type Reliability %	76
Dtrs/Herds	

DAUGHTER FERTILITY

Fertility Index/Rel.%	1.2
DPR/Rel.%	0.9/73
HCR/Rel.%	1.5/71
CCR/Rel.%	1.5/73

MANAGEMENT TRAITS

SCE/Rel.%	1.8/62
DCE/Rel.%	1.2/59
Gestation Length/Rel.%	-2.1/70
Early First Calving/Rel.%	3.1/69
SSB/Rel.%	5.5/59
DSB/Rel.%	4.0/56
Productive Life/Rel.%	5.2/74
Livability/Rel.%	2.6/69
SCS/Rel.%	2.73/75
Milking Speed/Rel.%	

CDCB/HA TYPE TRAITS

Stature	short		0.14	tall
Strength	frail		-0.48	strong
Body Depth	shallow		-0.67	deep
Dairy Form	tight ribbed		0.30	open ribbed
Rump Width	narrow		-0.19	wide
Rump Angle	high pins		-0.26	sloped
Rear Leg (side view)	posty		-0.89	sickled
Rear Leg (rear view)	hock-in		-0.16	straight
Foot Angle	low angle		0.57	steep angle
Feet & Leg Score	low		0.35	high
Fore Udder	loose		2.05	strong
Rear Udder Height	low		2.49	high
Rear Udder Width	narrow		1.81	wide
Udder Cleft	weak		0.78	strong
Udder Depth	deep		1.78	shallow
Front Teat Placement	wide		0.43	close
Rear Teat Placement	wide		0.86	close
Teat Length	short		0.15	long

SIRE FERTILITY

SCR/Rel.%

ZOETIS WELLNESS TRAITS CDCB

	Value	Rel.%		Value	Rel.%
	97	48	Mastitis	2.5	68
	106	49	Retained Placenta	0.0	57
	108	48	Metritis	1.4	58
	100	38	Hypocalcemia/Milk Fever	-0.1	47
	107	44	Ketosis	2.0	53
	95	44	Displaced Abomasum	0.3	56
	106	45	Lameness		
	101	41	Cow Respiratory Disease		
	102	36	Cow Abortion		
	105	45	Twinning		
	107	29	Cystic Ovary		
	N/A	N/A	Heifer Livability	1.00	51
	100	44	Calf Respiratory		
	100	45	Calf Scours		
	102	46	Calf Livability		