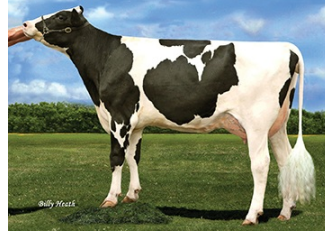


CHERRYPENCOL TREATY-ET TR TP TC TY TV TL TD HH1T HH2T HH3T HH4T HH5T HH6T

RIVETING X JEDI X COMMANDER

Sire: S-S-I BG FRZZLD RIVETING-ET
 Dam: CHERRY-ACRES JEDI LAURI-ET
 MGS: S-S-I MONTROSS JEDI-ET



DAM Cherry-Acres Jedi Lauri-ET

INDEXES

TPI	2909
NM\$	747
CM\$	798
Feed Efficiency (%)	205
Feed Saved	171
DWP\$	939
WT\$	190
CW\$	2

PRODUCTION

PTA Milk (lbs)	669
PTA Protein (lbs)	47
PTA Protein (%)	0.09
PTA Fat (lbs)	67
PTA Fat (%)	0.14
Production Reliability %	78
Dtrs/Herds	

TYPE

PTA Type	1.42
Udder Composite	2.04
Feet & Leg Composite	0.19
Body Weight Composite	-0.53
Dairy Composite	-0.17
Type Reliability %	76
Dtrs/Herds	

DAUGHTER FERTILITY

Fertility Index/Rel.%	1.4
DPR/Rel.%	0.8/73
HCR/Rel.%	2.1/72
CCR/Rel.%	1.7/73

MANAGEMENT TRAITS

SCE/Rel.%	2.5/62
DCE/Rel.%	2.0/60
Gestation Length/Rel.%	-0.1/71
Early First Calving/Rel.%	4.4/70
SSB/Rel.%	6.1/59
DSB/Rel.%	4.3/58
Productive Life/Rel.%	6.3/75
Livability/Rel.%	3.4/70
SCS/Rel.%	2.65/76
Milking Speed/Rel.%	

CDCB/HA TYPE TRAITS

Trait	Value	Rel.%	Visual	Value	Rel.%
Stature	short		■	0.63	tall
Strength	frail		■	-0.42	strong
Body Depth	shallow		■	-0.48	deep
Dairy Form	tight ribbed		■	0.72	open ribbed
Rump Width	narrow		■	0.01	wide
Rump Angle	high pins		■	0.62	sloped
Rear Leg (side view)	posty		■	-1.23	sickled
Rear Leg (rear view)	hock-in		■	0.17	straight
Foot Angle	low angle		■	0.83	steep angle
Feet & Leg Score	low		■	0.36	high
Fore Udder	loose		■	2.43	strong
Rear Udder Height	low		■	2.55	high
Rear Udder Width	narrow		■	1.92	wide
Udder Cleft	weak		■	1.02	strong
Udder Depth	deep		■	2.25	shallow
Front Teat Placement	wide		■	1.20	close
Rear Teat Placement	wide		■	1.25	close
Teat Length	short		■	-1.41	long

SIRE FERTILITY

SCR/Rel.%

ZOETIS WELLNESS TRAITS CDCB

	Value	Rel.%		Value	Rel.%
■	103	48	Mastitis	3.3	69
■	104	48	Retained Placenta	0.3	58
■	106	47	Metritis	1.7	59
■	91	37	Hypocalcemia/Milk Fever	0.1	49
■	107	44	Ketosis	2.4	55
■	102	44	Displaced Abomasum	0.5	57
■	109	45	Lameness		
■	106	40	Cow Respiratory Disease		
■	98	35	Cow Abortion		
■	101	44	Twinning		
■	105	28	Cystic Ovary		
■	N/A	N/A	Heifer Livability	1.00	53
■	100	45	Calf Respiratory		
■	105	43	Calf Scours		
■	98	47	Calf Livability		