



AltaTOP-RED

011H000594

KOEPON ALTATOP-RED-ET

SALVATORE RC X DELTA X CASHCOIN

HONLDM000648499675 | DOB 4/25/2018

Kappa-Casein AE | Beta-Casein A1A2

Haplotypes

Genetic Codes TC TD TL TP TV TY

aAa 243651 | EFI 10.5% | RHA 100%

Current Proof USA-202104

CDCB & HA-USA Genetic Evaluations 04/2021

CONFORMATION		Based on 0 Daughters in 0 Herds (78% Rel)			
PTAT			+1.82		
UDC			+2.24		
FLC			+1.17		
	-2	-1	0	1	2
Stature			+1.39	Tall	
Strength			+0.69	Strong	
Body Depth			+0.51	Deep	
Dairy form			+0.64	Open	
Rump Angle			+0.44	Sloped	
Thurl Width			+0.06	Wide	
R. Legs-S View			-0.54	Posty	
R. Legs-R View			+1.40	Straight	
Foot Angle			+1.65	Steep	
F&L Score			+1.36	High	
F. Udder Att.			+2.88	Strong	
R. Udder Ht.			+3.06	High	
R. Udder Wid.			+2.64	Wide	
Udder Cleft			+0.92	Strong	
Udder Depth			+2.08	Shallow	
F. Teat Place			+1.00	Close	
R. Teat Place			+0.92	Close	
Teat Length			-0.68	Short	

TPI	2600	NM\$	472
-----	------	------	-----



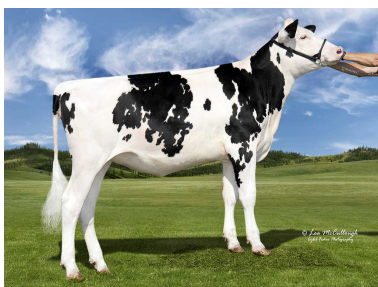
PRODUCTION		
Milk	+998 Lbs	80% Rel
Protein	+25 Lbs	-0.02%
Fat	+26 Lbs	-0.04%
Cheese Merit	+\$469	

Based on 0 Daughters in 0 Herds (100% US Daughters)		
Milk Production - US daughters		
Fat Yield - US daughters		
Protein Yield - US daughters		

HEALTH TRAITS			
Productive Life	+5.9	Daughter Pregnancy Rate	+0.5
Livability	+3.5	Cow Conception Rate	0.9
Somatic Cell Score	+2.76	Heifer Conception Rate	-0.7
Mastitis	2.0%	Metritis	2.0%
Ketosis	2.4%	Displaced Abomasum	1.1%
Retained Placenta	0.3%	Milk Fever	0.1%

PEDIGREE	
SIRE	MR SALVATORE RC-ET
DAM	DELTA SANNE RF-ET
MGS	MR MOGUL DELTA 1427-ET
MGD	MS SUNVIEW COIN SUNGLOW-ET
MGGS	FARNEAR-TBR-BH CASHCOIN-ET
MGGD	DYMENTHOLM SUNVIEW SUNDAY

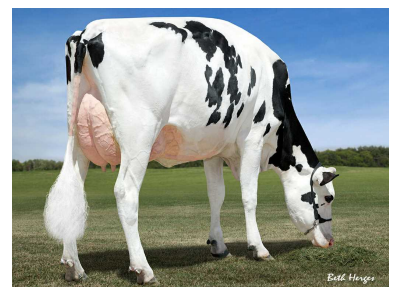
CALVING TRAITS				
Sire Calving Ease	2.3%	84% Rel	241	Observ
Dtr Calving Ease	2.3%	70% Rel	0	Observ 0 dtr.
Sire stillbirth	5.7%	74% Rel	237	Observ
Daughter stillbirth	5.0%	63% Rel	0	Observ 0 dtr.



MGD: MS Sunview Coin Sunglow-ET



MGGD: Dymentholm Sunview Sunday



MGGD: Dymentholm Sunview Sunday