

ROCKETFIRE

7H013454

HO840003129016236

S-S-I JOSUPER ROCKETFIRE-ET TR TP TY TV TL TD HH1T HH2T HH3T HH4T HH5T HH6T

JOSUPER X STERLING X ROBUST

Sire: UECKER SUPERSIRE JOSUPER-ET

Dam: S-S-I STRLNG TAYLOR 8728-ET

2-00 3X 263D 8414 kgM 2.7% 230 kgF 3.2% 270 kgP

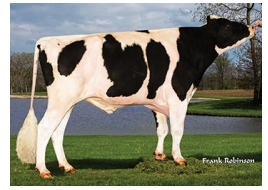
MGS: SANDY-VALLEY STERLING-ET

Born On: May 01, 2015

Beta-casein: A2

Kappa-casein: AB

aAa: 234165



Daughter Average:

14089 kgM 521 kgF 0.40%F 435 kgP 0.30%P



Jenny-Lou Rocketfire 4624



West Wing Rocketfire 2122-Grade



S-S-I Rockfir 5033 8223-ET

INDEXES

TPI	2787
NM\$	684
CM\$	688
Feed Efficiency (\$)	221
Feed Saved	-32
DWP\$	802
WT\$	5
CW\$	-19

PRODUCTION

PTA Milk (lbs)	2529
PTA Protein (lbs)	76
PTA Protein (%)	-0.01
PTA Fat (lbs)	59
PTA Fat (%)	-0.12
Production Reliability %	97
Dtrs/Herds	368/100

TYPE

PTA Type	0.55
Udder Composite	0.66
Feet & Leg Composite	-0.55
Body Weight Composite	0.55
Dairy Composite	0.60
Type Reliability %	94
Dtrs/Herds	170/54

DAUGHTER FERTILITY

Fertility Index/Rel.%	0.1
DPR/Rel.%	-0.5/90
HCR/Rel.%	1.3/83
CCR/Rel.%	1.4/90

MANAGEMENT TRAITS

SCE/Rel.%	2.8/97
DCE/Rel.%	2.8/86
Gestation Length/Rel.%	-2.6/99
Early First Calving/Rel.%	1.8/85
SSB/Rel.%	5.8/93
DSB/Rel.%	4.7/80
Productive Life/Rel.%	5.9/90
Livability/Rel.%	3.1/78
SCS/Rel.%	2.85/95
Milking Speed/Rel.%	

CDCB/HA TYPE TRAITS

Trait	Value	Rel.%	Target
Stature	short	0.59	tall
Strength	frail	0.95	strong
Body Depth	shallow	0.30	deep
Dairy Form	tight ribbed	0.67	open ribbed
Rump Width	narrow	0.14	wide
Rump Angle	high pins	-0.53	sloped
Rear Leg (side view)	posty	0.34	sickled
Rear Leg (rear view)	hock-in	-0.59	straight
Foot Angle	low angle	-0.31	steep angle
Feet & Leg Score	low	-0.32	high
Fore Udder	loose	0.62	strong
Rear Udder Height	low	2.10	high
Rear Udder Width	narrow	2.69	wide
Udder Cleft	weak	-1.10	strong
Udder Depth	deep	-0.58	shallow
Front Teat Placement	wide	-1.89	close
Rear Teat Placement	wide	-1.70	close
Teat Length	short	0.78	long

SIRE FERTILITY

SCR/Rel.%	-0.8/98
-----------	---------

ZOETIS WELLNESS TRAITS CDCB

Trait	Value	Rel.%	Value	Rel.%
Mastitis	98	76	1.1	81
Retained Placenta	99	80	-0.3	71
Metritis	104	67	0.5	70
Hypocalcemia/Milk Fever	91	49	0.0	61
Ketosis	110	71	2.2	65
Displaced Abomasum	106	74	0.9	70
Lameness	97	75		
Cow Respiratory Disease	104	70		
Cow Abortion	102	64		
Twinning	104	76		
Cystic Ovary	97	41		
Heifer Livability	N/A	N/A	1.00	62
Calf Respiratory	104	70		
Calf Scours	95	73		
Calf Livability	96	73		