

PARSLY 7H015523

HO840003208357105

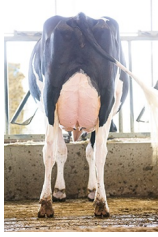
Born On: November 16, 2019
 Beta-casein: A2
 Kappa-casein: BB
 aAa: 324



SIEMERS TWN PARSLY 32480-ET TR TP TC TY TV TL TD HH5C HH1T HH2T HH3T HH4T HH6T

TOWN X DELTA-LAMBDA X DENVER

Sire: END-ROAD DEANO TOWN-ET
 Dam: SIEMERS LMDA PARIS 27856-ET VG-87
 2-00 2X 305D 12900 kgM 4.5% 586 kgF 3.5% 446 kgP
 MGS: FARNEAR DELTA-LAMBDA-ET



DAM Siemers Lmda Paris 27856-ET



MGD Siemers Denver Paris-ET



MGGD Quality Tango Paris

INDEXES

TPI	2950
NM\$	755
CM\$	787
Feed Efficiency (\$)	221
Feed Saved	-90
DWP\$	879
WT\$	74
CW\$	16

PRODUCTION

PTA Milk (lbs)	1454
PTA Protein (lbs)	61
PTA Protein (%)	0.05
PTA Fat (lbs)	80
PTA Fat (%)	0.08
Production Reliability %	77
Dtrs/Herds	

TYPE

PTA Type	1.73
Udder Composite	1.93
Feet & Leg Composite	0.78
Body Weight Composite	0.58
Dairy Composite	1.42
Type Reliability %	76
Dtrs/Herds	

DAUGHTER FERTILITY

Fertility Index/Rel.%	0.9
DPR/Rel.%	0.7/73
HCR/Rel.%	0.9/70
CCR/Rel.%	2.0/73

MANAGEMENT TRAITS

SCE/Rel.%	2.3/58
DCE/Rel.%	2.1/56
Gestation Length/Rel.%	-0.5/71
Early First Calving/Rel.%	1.0/69
SSB/Rel.%	6.3/53
DSB/Rel.%	5.3/53
Productive Life/Rel.%	5.5/74
Livability/Rel.%	1.8/69
SCS/Rel.%	2.86/75
Milking Speed/Rel.%	

CDCB/HA TYPE TRAITS

Stature	short	1.64	tall
Strength	frail	0.94	strong
Body Depth	shallow	1.11	deep
Dairy Form	tight ribbed	1.70	open ribbed
Rump Width	narrow	1.39	wide
Rump Angle	high pins	0.45	sloped
Rear Leg (side view)	posty	-1.10	sickled
Rear Leg (rear view)	hock-in	1.07	straight
Foot Angle	low angle	1.80	steep angle
Feet & Leg Score	low	1.05	high
Fore Udder	loose	1.95	strong
Rear Udder Height	low	3.24	high
Rear Udder Width	narrow	3.17	wide
Udder Cleft	weak	1.06	strong
Udder Depth	deep	0.95	shallow
Front Teat Placement	wide	0.63	close
Rear Teat Placement	wide	1.08	close
Teat Length	short	-0.26	long

SIRE FERTILITY

SCR/Rel.%

ZOETIS WELLNESS TRAITS CDCB

	Value	Rel.%		Value	Rel.%
	102	45	Mastitis	1.4	69
	97	46	Retained Placenta	-0.1	57
	101	44	Metritis	0.5	58
	100	35	Hypocalcemia/Milk Fever	0.0	47
	97	41	Ketosis	0.7	53
	102	41	Displaced Abomasum	0.3	56
	103	41	Lameness		
	97	37	Cow Respiratory Disease		
	101	32	Cow Abortion		
	97	41	Twinning		
	100	24	Cystic Ovary		
	N/A	N/A	Heifer Livability	1.00	51
	100	34	Calf Respiratory		
	104	35	Calf Scours		
	102	39	Calf Livability		