

# BLACKROCK

7H017648  
HO840003271807605

Born On: March 14, 2024  
Beta-casein: A2A2  
Kappa-casein: AB  
EFI: 10.9%  
aAa: 354



AURORA BLACKROCK-ET TR TP TM TC TY TV TL TD TE HH1T HH2T HH3T HH4T HH5T HH6T

## SUNDANCE X PERFECT X RAPID

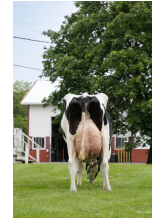
Sire: S-S-I EARLYBIRD SUNDANCE-ET  
Dam: AURORA PERFECT 23719-ET VG-88  
3-09 3X 365D 19,445 kgM 4.7% 920 kgF 3.3% 642 kgP  
MGS: SIEMERS RENGD PERFECT-ET



DAM Aurora Perfect 23719-ET



DAM Aurora Perfect 23719-ET



MGD Aurora Rapid 21849-ET

### INDEXES

TPI	3343
NM\$	811
CM\$	829
GM\$	775
Grazing Pro \$	290
Feed Efficiency (\$)	241
Feed Saved/Rel. %	103/47
HHP\$	850
DWP\$	965
WT\$	120
CW\$	49

### PRODUCTION

PTA Milk (lbs)	1340
PTA Protein (lbs)	50
PTA Protein (%)	0.02
PTA Fat (lbs)	77
PTA Fat (%)	0.08
Production Reliability %	82
Dtrs/Herds	0/0
Combined Fat & Protein	127

### TYPE

PTA Type	1.80
Udder Composite	1.36
Feet & Leg Composite	0.61
Body Weight Composite	0.52
Dairy Composite	1.18
Type Reliability %	80

### DAUGHTER FERTILITY

Fertility Index/Rel. %	0.6/75
DPR/Rel. %	-0.4/75
HCR/Rel. %	0.4/77
CCR/Rel. %	0.6/75

### MANAGEMENT

Residual Feed Intake/Rel. %	-188/28
SCE/Rel. %	2.7/88
Observations (Service Sire)	244
DCE/Rel. %	1.8/70
Observations (Daughter)	0
Gestation Length/Rel. %	-0.7/74
Early First Calving/Rel. %	4.6/73
SSB	4.1
DSB	3.5
Productive Life/Rel. %	4.5/76
Livability/Rel. %	-0.3/73
SCS/Rel. %	2.80/78
Milking Speed/Rel. %	7.29/64

### SIRE FERTILITY

SCR/Rel. %	-2.1/82
------------	---------

### CDCB/HA TYPE TRAITS

Trait	Value	Rel. %	Target
Stature	short	1.20	tall
Strength	frail	0.76	strong
Body Depth	shallow	0.87	deep
Dairy Form	tight ribbed	1.56	open ribbed
Rump Width	narrow	2.11	wide
Rump Angle	high pins	0.03	sloped
Rear Leg (side view)	posty	1.17	sickled
Rear Leg (rear view)	hock-in	1.04	straight
Foot Angle	low angle	0.40	steep angle
Feet & Leg Score	low	0.82	high
Fore Udder	loose	1.31	strong
Rear Udder Height	low	2.18	high
Rear Udder Width	narrow	2.29	wide
Udder Cleft	weak	1.10	strong
Udder Depth	deep	0.60	shallow
Front Teat Placement	wide	1.15	close
Rear Teat Placement	wide	1.25	close
Teat Length	short	-0.52	long

	ZOETIS			WELLNESS TRAITS			CDCB	
	Value	Rel. %		Value	Rel. %		Value	Rel. %
	101	39	Mastitis	2.3	72			
	100	27	Retained Placenta	0.1	70			
	108	34	Metritis	2	69			
	93	49	Hypocalcemia/Milk Fever	0	61			
	102	50	Ketosis	1.6	69			
	106	30	Lameness					
	97	45	Displaced Abomasum	1	72			
	96	49	Cow Respiratory Disease					
	105	38	Cow Abortion					
	98	36	Twinning					
	102	18	Cystic Ovary					
	N/A	N/A	Heifer Livability	0.1	63			
	98	40	Calf Respiratory Disease					
	112	53	Calf Scours					
	103	51	Calf Livability					