

AURORA TUBMAN-ET TR TP TM TC TY TV TL TD TE HH1T HH2T HH3T HH4T HH5T HH6T

SHEEPSTER X PERFECT X RAPID

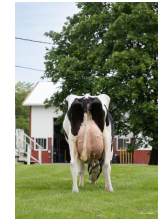
Sire: OCD TROOPER SHEEPSTER-ET
 Dam: AURORA PERFECT 23719-ET VG-88
 3-09 3X 365D 19,445 kgM 4.7% 920 kgF 3.3% 642 kgP
 MGS: SIEMERS RENG D PERFECT-ET



DAM Aurora Perfect 23719-ET



DAM Aurora Perfect 23719-ET



MGD Aurora Rapid 21849-ET

INDEXES

TPI	3383
NM\$	810
CM\$	822
GM\$	785
Grazing Pro \$	394
Feed Efficiency (\$)	254
Feed Saved/Rel. %	-44/49
HHP\$	921
DWP\$	958
WT\$	79
CW\$	61

PRODUCTION

PTA Milk (lbs)	1676
PTA Protein (lbs)	57
PTA Protein (%)	0.01
PTA Fat (lbs)	88
PTA Fat (%)	0.07
Production Reliability %	82
Dtrs/Herds	0/0
Combined Fat & Protein	145

TYPE

PTA Type	1.54
Udder Composite	1.11
Feet & Leg Composite	0.98
Body Weight Composite	0.29
Dairy Composite	0.53
Type Reliability %	82

DAUGHTER FERTILITY

Fertility Index/Rel. %	1.0/78
DPR/Rel. %	-0.1/78
HCR/Rel. %	2.2/77
CCR/Rel. %	1.4/78

MANAGEMENT

Residual Feed Intake/Rel. %	-4/30
SCE/Rel. %	1.8/77
Observations (Service Sire)	48
DCE/Rel. %	1.6/70
Observations (Daughter)	0
Gestation Length/Rel. %	-0.5/76
Early First Calving/Rel. %	2.7/73
SSB	4.0
DSB	4.3
Productive Life/Rel. %	4.2/78
Livability/Rel. %	-1.3/74
SCS/Rel. %	2.90/80
Milking Speed/Rel. %	7.51/67

CDCB/HA TYPE TRAITS

Trait	Value	Rel. %	Visual	Value	Rel. %
Stature	short			0.51	tall
Strength	frail			0.49	strong
Body Depth	shallow			0.29	deep
Dairy Form	tight ribbed			1.06	open ribbed
Rump Width	narrow			1.76	wide
Rump Angle	high pins			-0.47	sloped
Rear Leg (side view)	posty			1.12	sickled
Rear Leg (rear view)	hock-in			1.69	straight
Foot Angle	low angle			0.55	steep angle
Feet & Leg Score	low			0.89	high
Fore Udder	loose			1.30	strong
Rear Udder Height	low			1.52	high
Rear Udder Width	narrow			1.90	wide
Udder Cleft	weak			0.30	strong
Udder Depth	deep			0.55	shallow
Front Teat Placement	wide			0.30	close
Rear Teat Placement	wide			0.14	close
Teat Length	short			0.27	long

SIRE FERTILITY

SCR/Rel. %	-1.3/90
------------	---------

	ZOETIS			WELLNESS TRAITS		CDCB	
	Value	Rel. %		Value	Rel. %	Value	Rel. %
	101	43	Mastitis	1.9	73		
	101	32	Retained Placenta	0.1	73		
	105	38	Metritis	1.7	72		
	95	53	Hypocalcemia/Milk Fever	0	64		
	99	53	Ketosis	0.9	71		
	103	34	Lameness				
	99	48	Displaced Abomasum	0.8	74		
	99	52	Cow Respiratory Disease				
	98	41	Cow Abortion				
	94	37	Twinning				
	103	21	Cystic Ovary				
	N/A	N/A	Heifer Livability	0	64		
	100	43	Calf Respiratory Disease				
	111	43	Calf Scours				
	106	54	Calf Livability				