



AOT HIGHJUMP  
 QUIET-BROOK-D HELX LADIX  
 AOT SILVER HELIX  
 QUIET-BROOK-D DELTA LADDLE VG-87-4YR-USA  
 MR MOGUL DELTA 1427  
 QUIET-BROOK-D BABYLAT VG-87-3YR-USA

**GTPI 2969**

TD TM TR TL TY MWT TV 99%-I HH1F HH2F HH3F HH4F HH5F HH6F HCDF HMWF

Reg. #: HO840M3212874416 aAa: 324165 DMS: 135,345  
 Born: 11/05/2020 Kappa Casein: AB Beta Casein: A2A2

**PRODUCTION** 705 Herds 2075 Dtrs 97% Rel MACE-G / 04-26

Milk lbs <b>1004</b>	Fat lbs <b>67</b>	Fat % <b>+0.09</b>	Protein lbs <b>36</b>	Protein % <b>+0.01</b>
NM\$ <b>408</b>	CM\$ <b>420</b>	FM\$ <b>383</b>	GM\$ <b>390</b>	DWP\$ <b>520</b>
Feed Efficiency <b>175</b>	RFI <b>42</b>	Feed Saved <b>-79</b>	Methane Efficiency <b>97</b>	Milking Speed <b>7.04</b>

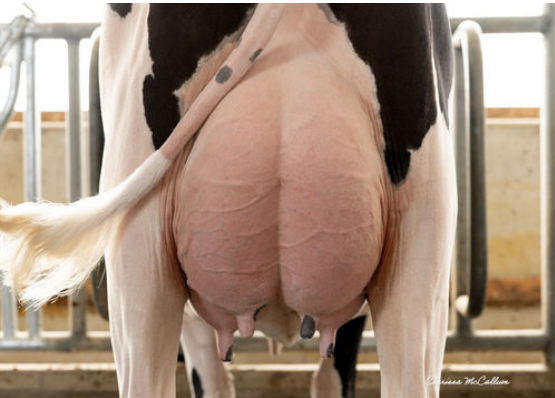
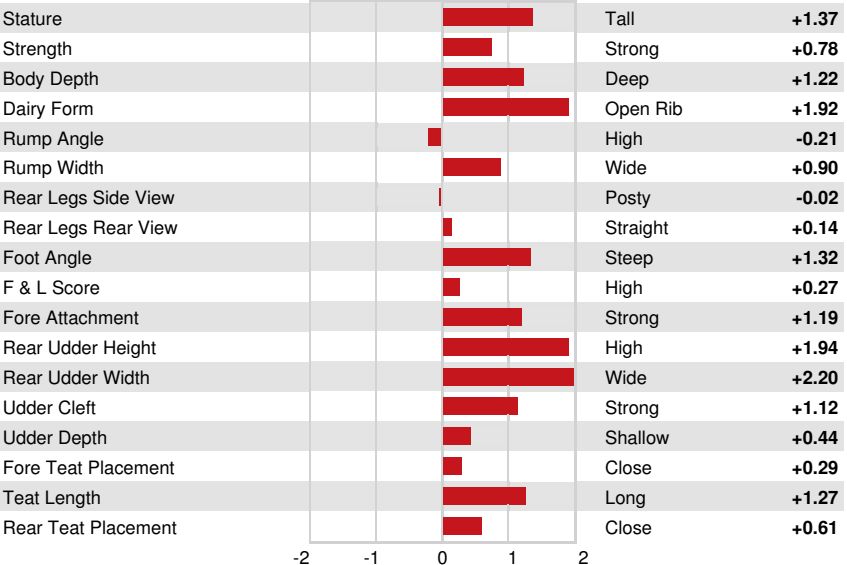
Daughter Average (ME) Milk **27,513 lbs** Fat **1,206 lbs** Protein **929 lbs**

**HEALTH & REPRODUCTION** Immunity **97**

Productive Life	<b>0.1</b>	Calf Immunity	<b>96</b>
Somatic Cell Score	<b>2.82</b>	Cow Conception Rate	<b>-1.4</b>
Daughter Pregnancy Rate	<b>-1.7</b>	Heifer Conception Rate	<b>-0.4</b>
Livability	<b>-3.9</b>	Sire Calving Ease	<b>1.4%</b> 96% Rel
Heifer Livability	<b>0.1</b>	Daughter Calving Ease	<b>1.8%</b> 88% Rel
Fertility Index	<b>-1.2</b>	Sire Stillbirth	<b>3.3%</b>
		Daughter Stillbirth	<b>4.2%</b>

**CONFORMATION** 421 Herds 983 Dtrs 95% Rel MACE / 04-26

PTAT	<b>1.42</b>	Body Composite	<b>0.22</b>
Udder Composite	<b>1.08</b>	Dairy Composite	<b>1.37</b>
Feet & Legs Composite	<b>0.01</b>		



CATIDID DELIGHT LARSON  
 DAUGHTER



PROGENESIS LARSON KELLEY  
 DAUGHTER



GRIMMELMANN'S BE HOT  
 DAUGHTER