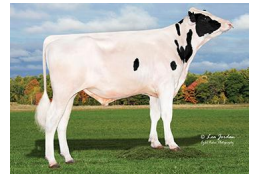


DRESSUP

7H017527
HO840003247634527

Born On: September 17, 2023
Beta-casein: A1A2
Kappa-casein: AB
EF1: 11.3%
aAa: 312



KINGS-RANSOM S DRESSUP-ET TR TP TM TC TY TV TL TD TE HH1T HH2T HH3T HH4T HH5T HH6T
SHEEPSTER X MAUI X ACURA

Sire: OCD TROOPER SHEEPSTER-ET
Dam: KINGS-RANSOM DAIRE-ET VG-86
2-10 3X 287D 14,710 kgM 4.6% 677 kgF 3.4% 500 kgP
MGS: LA-CA-DE-LE MAUI-ET



INDEXES

TPI	3376
NM\$	957
CM\$	983
GM\$	878
Grazing Pro \$	297
Feed Efficiency (\$)	333
Feed Saved/Rel. %	27/48
HHP\$	991
DWP\$	1054
WT\$	11
CW\$	58

PRODUCTION

PTA Milk (lbs)	1311
PTA Protein (lbs)	56
PTA Protein (%)	0.05
PTA Fat (lbs)	126
PTA Fat (%)	0.26
Production Reliability %	82
Dtrs/Herds	0/0
Combined Fat & Protein	182

TYPE

PTA Type	1.63
Udder Composite	0.97
Feet & Leg Composite	0.40
Body Weight Composite	0.17
Dairy Composite	1.30
Type Reliability %	81

DAUGHTER FERTILITY

Fertility Index/Rel. %	-1.8/77
DPR/Rel. %	-2.8/77
HCR/Rel. %	1.0/76
CCR/Rel. %	-2.3/77

MANAGEMENT

Residual Feed Intake/Rel. %	-55/28
SCE/Rel. %	2.3/78
Observations (Service Sire)	65
DCE/Rel. %	2.5/70
Observations (Daughter)	0
Gestation Length/Rel. %	-0.3/76
Early First Calving/Rel. %	1.8/72
SSB	4.4
DSB	5.2
Productive Life/Rel. %	3.3/77
Livability/Rel. %	0.7/74
SCS/Rel. %	2.90/79
Milking Speed/Rel. %	6.88/65

SIRE FERTILITY

SCR/Rel. %	-1.5/78
------------	---------

CDCB/HA TYPE TRAITS

Trait	Value	Rel. %	Target
Stature	short	1.42	tall
Strength	frail	0.64	strong
Body Depth	shallow	0.97	deep
Dairy Form	tight ribbed	2.06	open ribbed
Rump Width	narrow	1.59	wide
Rump Angle	high pins	1.93	sloped
Rear Leg (side view)	posty	0.38	sickled
Rear Leg (rear view)	hock-in	0.74	straight
Foot Angle	low angle	0.34	steep angle
Feet & Leg Score	low	0.68	high
Fore Udder	loose	0.91	strong
Rear Udder Height	low	1.33	high
Rear Udder Width	narrow	2.11	wide
Udder Cleft	weak	1.16	strong
Udder Depth	deep	0.51	shallow
Front Teat Placement	wide	0.95	close
Rear Teat Placement	wide	1.01	close
Teat Length	short	0.27	long

	ZOETIS		WELLNESS TRAITS	CDCB	
	Value	Rel. %		Value	Rel. %
	104	43	Mastitis	2.4	73
	102	32	Retained Placenta	0.1	72
	96	38	Metritis	0.4	71
	94	53	Hypocalcemia/Milk Fever	0	63
	83	53	Ketosis	-0.4	71
	98	34	Lameness		
	94	48	Displaced Abomasum	0.2	74
	100	52	Cow Respiratory Disease		
	97	41	Cow Abortion		
	108	37	Twinning		
	104	21	Cystic Ovary		
	N/A	N/A	Heifer Livability	0.8	62
	103	43	Calf Respiratory Disease		
	104	43	Calf Scours		
	109	54	Calf Livability		