

SHEEPSTER

7H016276
HO840003236792832

Born On: July 09, 2021
Beta-casein: A1A2
Kappa-casein: AA
EF1: 10.9%
aAa: 342



OCD TROOPER SHEEPSTER-ET TR TP TC TY TV TL TD TE HH1T HH2T HH3T HH4T HH5T HH6T

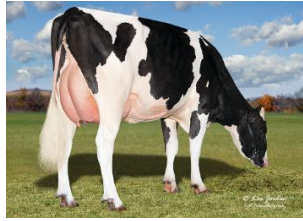
TROOPER X ACURA X RESOLVE

Sire: PLAIN-KNOLL RENEGAD TROOPER
Dam: OCD ACURA SOY 60075-ET EX-90
3-05 3X 301D 16,583 kgM 4.3% 721 kgF 3.3% 551 kgP
MGS: PINE-TREE ACURA-ET

Daughter Average:
12,336 kgM 597 kgF 4.80%F 436 kgP 3.50%P



Clear-Echo Sheepster 6083-ET



Lars-Acres Sheep Anaya-ET



Jenny-Lou Sheepster 6592

INDEXES

TPI	3480
NM\$	1081
CM\$	1121
GM\$	1004
Grazing Pro \$	615
Feed Efficiency (\$)	360
Feed Saved/Rel. %	-7/56
HHP\$	1116

PRODUCTION

PTA Milk (lbs)	1359
PTA Protein (lbs)	67
PTA Protein (%)	0.08
PTA Fat (lbs)	133
PTA Fat (%)	0.28
Production Reliability %	99
Dtrs/Herds	2359/187
Combined Fat & Protein	200

TYPE

PTA Type	0.86
Udder Composite	0.39
Feet & Leg Composite	0.57
Body Weight Composite	-0.41
Dairy Composite	-0.06
Type Reliability %	98
Dtrs/Herds	435/49

DAUGHTER FERTILITY

Fertility Index/Rel. %	-0.9/94
DPR/Rel. %	-2.3/93
HCR/Rel. %	0.8/97
CCR/Rel. %	-0.7/92

MANAGEMENT

Residual Feed Intake/Rel. %	74/31
SCE/Rel. %	2.0/99
Observations (Service Sire)	6734
DCE/Rel. %	2.0/98
Observations (Daughter)	921
Gestation Length/Rel. %	-0.9/99
Early First Calving/Rel. %	1.8/76
SSB	4.4
DSB	4.9
Productive Life/Rel. %	4.9/90
Livability/Rel. %	0.6/86
SCS/Rel. %	2.83/98
Milking Speed/Rel. %	7.19/94

CDCB/HA TYPE TRAITS

Trait	Value	Rel. %	Target
Stature	short	-0.08	tall
Strength	frail	-0.19	strong
Body Depth	shallow	-0.45	deep
Dairy Form	tight ribbed	0.77	open ribbed
Rump Width	narrow	0.87	wide
Rump Angle	high pins	0.66	sloped
Rear Leg (side view)	posty	-0.75	sickled
Rear Leg (rear view)	hock-in	1.21	straight
Foot Angle	low angle	0.42	steep angle
Feet & Leg Score	low	0.34	high
Fore Udder	loose	0.35	strong
Rear Udder Height	low	0.28	high
Rear Udder Width	narrow	1.22	wide
Udder Cleft	weak	0.24	strong
Udder Depth	deep	-0.13	shallow
Front Teat Placement	wide	0.19	close
Rear Teat Placement	wide	0.01	close
Teat Length	short	0.58	long

SIRE FERTILITY

SCR/Rel. %	-0.4/97
------------	---------

	ZOETIS		WELLNESS TRAITS		CDCB	
	Value	Rel. %	Value	Rel. %	Value	Rel. %
	N/A	N/A	Mastitis	0.9	80	
	N/A	N/A	Retained Placenta	0.3	89	
	N/A	N/A	Metritis	1.9	87	
	N/A	N/A	Hypocalcemia/Milk Fever	0	73	
	N/A	N/A	Ketosis	1.4	84	
	N/A	N/A	Lameness			
	N/A	N/A	Displaced Abomasum	0.4	90	
	N/A	N/A	Cow Respiratory Disease			
	N/A	N/A	Cow Abortion			
	N/A	N/A	Twinning			
	N/A	N/A	Cystic Ovary			
	N/A	N/A	Heifer Livability	0	66	
	N/A	N/A	Calf Respiratory Disease			
	N/A	N/A	Calf Scours			
	N/A	N/A	Calf Livability			