



PEAK WHEELHOUSE
 COOKIECUTTER A HOMILY EX-90-5YR-CAN 1*
 A-S-CANNON FRZZLD BIG AL
 COOKIECUTTER HOPELYNN EX-90-2E-USA DOM
 BLUMENFELD JEDI REASON
 COOKIECUTTER RUBI HOMEY EX-91-2E-USA DOM

GTPI 3299

TD TR TL TY MWC TV 99%-I HH1F HH2F HH3F HH4F HH5C HH6F HCDF HMWC

Reg. #: HO840M3224956499 aAa: 432561 DMS: 135,561
 Born: 05/15/2021 Kappa Casein: AB Beta Casein: A1A2

PRODUCTION 123 Herds 454 Dtrs 97% Rel MACE-G / 04-26

Milk lbs 935	Fat lbs 80	Fat % +0.15	Protein lbs 53	Protein % +0.08
NM\$ 865	CM\$ 905	FM\$ 774	GM\$ 833	DWP\$ 1059
Feed Efficiency 253	RFI -191	Feed Saved 106	Methane Efficiency 99	Milking Speed 6.72

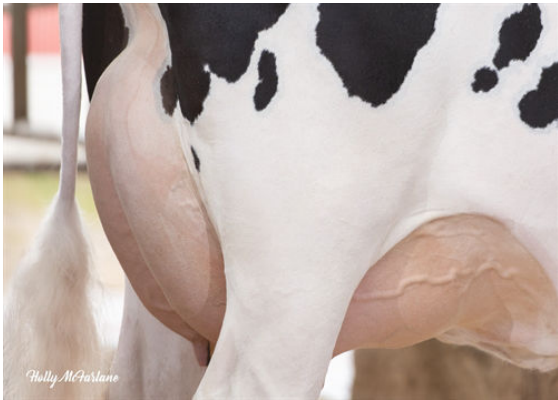
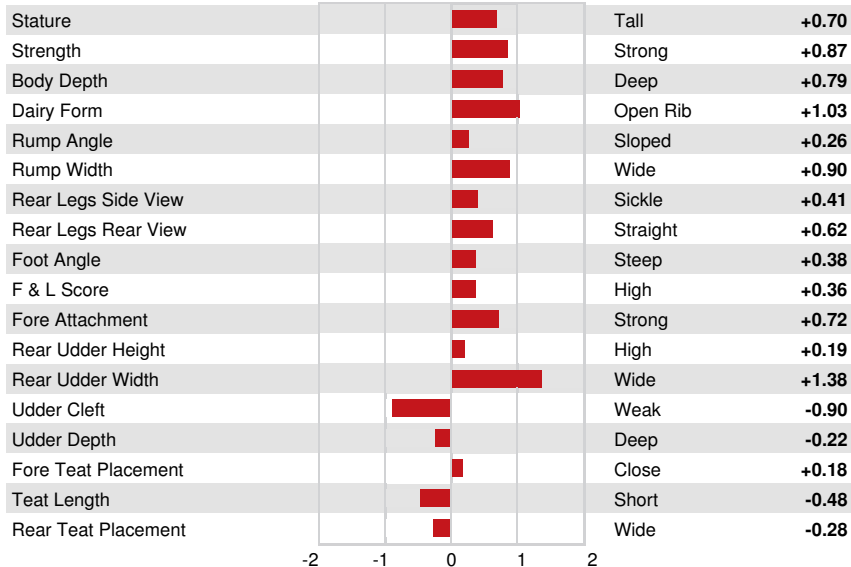
Daughter Average (ME) Milk **27,835 lbs** Fat **1,322 lbs** Protein **982 lbs**

HEALTH & REPRODUCTION Immunity **107**

Productive Life	4.5	Calf Immunity	102
Somatic Cell Score	2.75	Cow Conception Rate	1.3
Daughter Pregnancy Rate	-0.2	Heifer Conception Rate	3.6
Livability	1.5	Sire Calving Ease	1.5% 95% Rel
Heifer Livability	1.1	Daughter Calving Ease	1.6% 94% Rel
Fertility Index	1.3	Sire Stillbirth	4.2%
		Daughter Stillbirth	3.7%

CONFORMATION 78 Herds 312 Dtrs 97% Rel MACE / 04-26

PTAT	0.67	Body Composite	0.52
Udder Composite	0.15	Dairy Composite	0.73
Feet & Legs Composite	0.28		



COOKIECUTTER A HOMILY
DAM



COOKIECUTTER A HOMILY
DAM



COOKIECUTTER HOPELYNN
GRANDDAM