

RENEGADE

250H014134
HO840003142352961

Born On: March 26, 2017
Beta-casein: A1A2
Kappa-casein: BB
EFI: 10.0%
aAa: 213



S-S-I PR RENEGADE-ET TR TP TM TC TY TV TL TD TE HH1T HH2T HH3T HH4T HH5T HH6T

JALTAOAK X MILLINGTON X DAVINCI

Sire: JALTAOAK

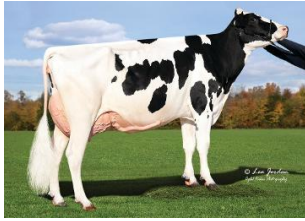
Dam: S-S-I MLNGTN 10398 11588-ET VG-85

2-00 2X 365D 14,367 kgM 3.8% 537 kgF 3.2% 458 kgP

MGS: DE-SU MILLINGTON 12074-ET

Daughter Average:

12,394 kgM 538 kgF 4.30%F 415 kgP 3.30%P



AOT Renegade Letchworth



S-S-I Renegad 8235 10203-ET



Renegade daughter group at Eastknook Holste...

INDEXES

TPI	3041
NM\$	279
CM\$	305
GM\$	299
Grazing Pro \$	213
Feed Efficiency (\$)	143
Feed Saved/Rel. %	-337/76
HHP\$	484
DWP\$	293
WT\$	-120
CW\$	-26

PRODUCTION

PTA Milk (lbs)	811
PTA Protein (lbs)	43
PTA Protein (%)	0.06
PTA Fat (lbs)	61
PTA Fat (%)	0.10
Production Reliability %	99
Dtrs/Herds	29007/4899
Combined Fat & Protein	104

TYPE

PTA Type	1.19
Udder Composite	0.73
Feet & Leg Composite	1.76
Body Weight Composite	0.96
Dairy Composite	0.10
Type Reliability %	99
Dtrs/Herds	12705/2679

DAUGHTER FERTILITY

Fertility Index/Rel. %	0.7/99
DPR/Rel. %	0.6/99
HCR/Rel. %	-0.7/99
CCR/Rel. %	1.4/99

MANAGEMENT

Residual Feed Intake/Rel. %	181/62
SCE/Rel. %	1.9/99
Observations (Service Sire)	50922
DCE/Rel. %	1.5/99
Observations (Daughter)	5980
Gestation Length/Rel. %	1.5/99
Early First Calving/Rel. %	-0.7/99
SSB	5.0
DSB	3.8
Productive Life/Rel. %	0.4/99
Livability/Rel. %	-7.0/97
SCS/Rel. %	3.01/99
Milking Speed/Rel. %	7.27/99

SIRE FERTILITY

SCR/Rel. %	-1.8/99
------------	---------

CDCB/HA TYPE TRAITS

Trait	Value	Rel. %	Target
Stature	short	0.94	tall
Strength	frail	0.96	strong
Body Depth	shallow	0.38	deep
Dairy Form	tight ribbed	0.00	open ribbed
Rump Width	narrow	0.11	wide
Rump Angle	high pins	0.24	sloped
Rear Leg (side view)	posty	0.39	sickled
Rear Leg (rear view)	hock-in	2.70	straight
Foot Angle	low angle	1.40	steep angle
Feet & Leg Score	low	1.61	high
Fore Udder	loose	1.17	strong
Rear Udder Height	low	1.18	high
Rear Udder Width	narrow	1.11	wide
Udder Cleft	weak	0.26	strong
Udder Depth	deep	1.03	shallow
Front Teat Placement	wide	-0.10	close
Rear Teat Placement	wide	-0.13	close
Teat Length	short	1.20	long

	ZOETIS			WELLNESS TRAITS			CDCB	
	Value	Rel. %		Value	Rel. %		Value	Rel. %
	95	99		Mastitis	-0.1	99		
	101	99		Retained Placenta	0.3	98		
	103	99		Metritis	1.2	98		
	88	99		Hypocalcemia/Milk Fever	0.1	95		
	102	99		Ketosis	1.3	98		
	96	99		Lameness				
	100	98		Displaced Abomasum	0.5	99		
	99	99		Cow Respiratory Disease				
	97	98		Cow Abortion				
	102	99		Twinning				
	97	95		Cystic Ovary				
	N/A	N/A		Heifer Livability	-1.1	96		
	87	98		Calf Respiratory Disease				
	110	98		Calf Scours				
	91	98		Calf Livability				