

# MICKAEL-P

7H017952  
HO840003284828772

Born On: September 25, 2024  
Beta-casein: A2A2  
Kappa-casein: AB  
EF1: 11.2%  
aAa: 315

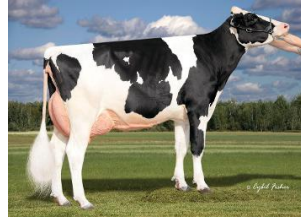
S-S-I SIEMERS MICKAEL-P-ET TR PC TM TC TY TV TL TD TE HH1T HH2T HH3T HH4T HH5T HH6T

## ALLGONE-PP X FRAMPTON X DELUXE

Sire: AR-JOY CU ALLGONE-PP-ET  
Dam: BEYOND FRAMPTON 41578-ET GP-83  
1-11 3X 305D 13,540 kgM 4.9% 670 kgF 3.2% 434 kgP  
MGS: OCD GAMEDAY FRAMPTON-ET



MGD AOT Deluxe Hi-Lighted-ET



4th DAM AOT Jared Haskel-ET

### INDEXES

TPI	3328
NM\$	669
CM\$	691
GM\$	619
Grazing Pro \$	200
Feed Efficiency (\$)	235
Feed Saved/Rel. %	-221/47
HHP\$	817
DWP\$	838
WT\$	124
CW\$	-52

### PRODUCTION

PTA Milk (lbs)	1066
PTA Protein (lbs)	44
PTA Protein (%)	0.03
PTA Fat (lbs)	102
PTA Fat (%)	0.21
Production Reliability %	80
Dtrs/Herds	0/0
Combined Fat & Protein	146

### TYPE

PTA Type	2.28
Udder Composite	2.08
Feet & Leg Composite	1.09
Body Weight Composite	1.00
Dairy Composite	1.47
Type Reliability %	79

### DAUGHTER FERTILITY

Fertility Index/Rel. %	-0.8/74
DPR/Rel. %	-1.8/74
HCR/Rel. %	0.9/73
CCR/Rel. %	-1.4/74

### MANAGEMENT

Residual Feed Intake/Rel. %	59/28
SCE/Rel. %	1.5/63
Observations (Service Sire)	0
DCE/Rel. %	1.5/58
Observations (Daughter)	0
Gestation Length/Rel. %	-0.7/73
Early First Calving/Rel. %	3.9/72
SSB	3.8
DSB	4.1
Productive Life/Rel. %	1.7/74
Livability/Rel. %	-1.9/72
SCS/Rel. %	2.75/75
Milking Speed/Rel. %	7.25/63

### CDCB/HA TYPE TRAITS

Trait	Value	Rel. %	Visual	Value	Rel. %
Stature	short			1.68	tall
Strength	frail			1.24	strong
Body Depth	shallow			1.38	deep
Dairy Form	tight ribbed			1.52	open ribbed
Rump Width	narrow			1.89	wide
Rump Angle	high pins			-0.14	sloped
Rear Leg (side view)	posty			0.13	sickled
Rear Leg (rear view)	hock-in			1.18	straight
Foot Angle	low angle			1.52	steep angle
Feet & Leg Score	low			1.40	high
Fore Udder	loose			2.40	strong
Rear Udder Height	low			2.80	high
Rear Udder Width	narrow			3.17	wide
Udder Cleft	weak			1.59	strong
Udder Depth	deep			1.55	shallow
Front Teat Placement	wide			1.38	close
Rear Teat Placement	wide			1.61	close
Teat Length	short			-0.63	long

	ZOETIS		WELLNESS TRAITS	CDCB		
	Value	Rel. %		Value	Rel. %	
	104	52	Mastitis	3.3	71	
	98	44	Retained Placenta	-0.1	69	
	107	48	Metritis	1.2	68	
	94	59	Hypocalcemia/Milk Fever	0	60	
	91	60	Ketosis	-0.3	68	
	105	43	Lameness			
	84	55	Displaced Abomasum	-0.6	71	
	98	58	Cow Respiratory Disease			
	107	47	Cow Abortion			
	102	47	Twinning			
	100	28	Cystic Ovary			
	N/A	N/A	Heifer Livability	-0.1	62	
	84	52	Calf Respiratory Disease			
	99	52	Calf Scours			
	96	62	Calf Livability			