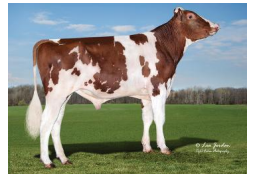


# PAPAYA-RED

7H017695  
HO840003267430129

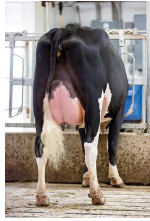
Born On: October 27, 2023  
Beta-casein: A1A2  
Kappa-casein: AA  
EFI: 10.8%  
aAa: 423



SIEMERS RLE PAPAYA-RED-ET TP TM TC TY TV TL TD TE HH1T HH2T HH3T HH4T HH5T HH6T

## REDLEA X GAMEDAY X MARK \*RC

Sire: STGEN RC REDLEA-ET  
Dam: SIEMERS GD PARIS 36374-ET VG-85  
1-10 3X 308D 14,261 kgM 4.3% 612 kgF 3.2% 455 kgP  
MGS: RMD-DOTTERER SSI GAMEDAY-ET



DAM Siemers GD Paris 36374-ET



DAM Siemers GD Paris 36374-ET

### INDEXES

TPI	3174
NM\$	588
CM\$	616
GM\$	542
Grazing Pro \$	275
Feed Efficiency (\$)	221
Feed Saved/Rel. %	-107/47
HHP\$	638
DWP\$	521
WT\$	-171
CW\$	2

### PRODUCTION

PTA Milk (lbs)	865
PTA Protein (lbs)	46
PTA Protein (%)	0.06
PTA Fat (lbs)	84
PTA Fat (%)	0.18
Production Reliability %	82
Dtrs/Herds	0/0
Combined Fat & Protein	130

### TYPE

PTA Type	1.63
Udder Composite	1.67
Feet & Leg Composite	0.80
Body Weight Composite	-0.27
Dairy Composite	0.10
Type Reliability %	81

### DAUGHTER FERTILITY

Fertility Index/Rel. %	-1.1/77
DPR/Rel. %	-1.6/77
HCR/Rel. %	-0.2/76
CCR/Rel. %	-1.7/77

### MANAGEMENT

Residual Feed Intake/Rel. %	151/27
SCE/Rel. %	1.7/85
Observations (Service Sire)	151
DCE/Rel. %	1.8/71
Observations (Daughter)	0
Gestation Length/Rel. %	-1.7/76
Early First Calving/Rel. %	2.6/73
SSB	4.1
DSB	4.5
Productive Life/Rel. %	1.7/77
Livability/Rel. %	-1.3/73
SCS/Rel. %	3.03/79
Milking Speed/Rel. %	7.25/64

### SIRE FERTILITY

SCR/Rel. %	1.7/76
------------	--------

### CDCB/HA TYPE TRAITS

Trait	Value	Rel. %	Target
Stature	short	0.34	tall
Strength	frail	-0.22	strong
Body Depth	shallow	-0.13	deep
Dairy Form	tight ribbed	0.92	open ribbed
Rump Width	narrow	1.50	wide
Rump Angle	high pins	-0.44	sloped
Rear Leg (side view)	posty	1.49	sickled
Rear Leg (rear view)	hock-in	0.49	straight
Foot Angle	low angle	0.44	steep angle
Feet & Leg Score	low	0.99	high
Fore Udder	loose	1.71	strong
Rear Udder Height	low	1.96	high
Rear Udder Width	narrow	2.25	wide
Udder Cleft	weak	1.01	strong
Udder Depth	deep	1.13	shallow
Front Teat Placement	wide	1.40	close
Rear Teat Placement	wide	1.51	close
Teat Length	short	-0.98	long

	ZOETIS			WELLNESS TRAITS			CDCB	
	Value	Rel. %		Value	Rel. %		Value	Rel. %
	97	34	Mastitis	1.4	73			
	91	23	Retained Placenta	-0.4	71			
	100	30	Metritis	1.5	70			
	92	45	Hypocalcemia/Milk Fever	0	62			
	87	46	Ketosis	-1.4	69			
	100	26	Lameness					
	72	41	Displaced Abomasum	-1.1	73			
	82	45	Cow Respiratory Disease					
	102	34	Cow Abortion					
	99	29	Twinning					
	104	15	Cystic Ovary					
	N/A	N/A	Heifer Livability	0.4	63			
	92	36	Calf Respiratory Disease					
	101	42	Calf Scours					
	104	47	Calf Livability					