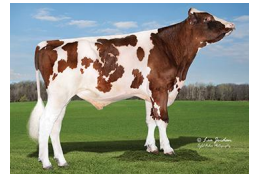


EXCLUSIVE-RED

7H017155
HO840003240737692

Born On: November 02, 2022
Beta-casein: A2A2
Kappa-casein: AB
EF1: 10.1%
aAa: 342



TRENT-WAY EXCLUSIVE-RED-ET TP TM TC TY TV TL TD TE HH1T HH2T HH3T HH4T HH5T HH6T

NETWORK-RED X PARFECT X ALTUVE*RC

Sire: JIMTOWN NETWORK-RED-ET
Dam: TRENT-WAY ESSAY-ET VG-88
2-01 2X 365D 14,705 kgM 5.2% 765 kgF 3.3% 488 kgP
MGS: SIEMERS RENGD PARFECT-ET



Glomar Exclusive Lady 8024 Red



Glomar Exclusive Lady 8074 Red



DAM Trent-Way Essay-ET

INDEXES

TPI	2952
NM\$	379
CM\$	393
GM\$	377
Grazing Pro \$	322
Feed Efficiency (\$)	103
Feed Saved/Rel. %	-168/48
HHP\$	455
DWP\$	469
WT\$	-3
CW\$	45

PRODUCTION

PTA Milk (lbs)	390
PTA Protein (lbs)	22
PTA Protein (%)	0.03
PTA Fat (lbs)	47
PTA Fat (%)	0.12
Production Reliability %	82
Dtrs/Herds	0/0
Combined Fat & Protein	69

TYPE

PTA Type	1.30
Udder Composite	0.57
Feet & Leg Composite	0.36
Body Weight Composite	0.84
Dairy Composite	0.60
Type Reliability %	81

DAUGHTER FERTILITY

Fertility Index/Rel. %	1.8/77
DPR/Rel. %	1.3/77
HCR/Rel. %	0.8/75
CCR/Rel. %	1.7/77

MANAGEMENT

Residual Feed Intake/Rel. %	32/28
SCE/Rel. %	1.3/97
Observations (Service Sire)	3264
DCE/Rel. %	1.2/71
Observations (Daughter)	0
Gestation Length/Rel. %	-2.3/76
Early First Calving/Rel. %	4.7/74
SSB	3.6
DSB	3.4
Productive Life/Rel. %	2.0/77
Livability/Rel. %	-0.3/73
SCS/Rel. %	3.02/78
Milking Speed/Rel. %	6.86/64

CDCB/HA TYPE TRAITS

Trait	Value	Rel. %	Target
Stature	short	1.08	tall
Strength	frail	0.90	strong
Body Depth	shallow	0.88	deep
Dairy Form	tight ribbed	0.59	open ribbed
Rump Width	narrow	0.88	wide
Rump Angle	high pins	1.23	sloped
Rear Leg (side view)	posty	0.52	sickled
Rear Leg (rear view)	hock-in	1.03	straight
Foot Angle	low angle	0.54	steep angle
Feet & Leg Score	low	0.44	high
Fore Udder	loose	0.75	strong
Rear Udder Height	low	1.17	high
Rear Udder Width	narrow	1.20	wide
Udder Cleft	weak	0.52	strong
Udder Depth	deep	0.11	shallow
Front Teat Placement	wide	0.58	close
Rear Teat Placement	wide	0.48	close
Teat Length	short	0.35	long

SIRE FERTILITY

SCR/Rel. %	1.3/95
------------	--------

	ZOETIS			WELLNESS TRAITS			CDCB	
	Value	Rel. %		Value	Rel. %		Value	Rel. %
	100	32	Mastitis	1.1	73			
	101	21	Retained Placenta	0.6	71			
	102	28	Metritis	1.4	70			
	96	43	Hypocalcemia/Milk Fever	-0.2	62			
	104	44	Ketosis	0.8	68			
	99	25	Lameness					
	100	39	Displaced Abomasum	0.4	72			
	87	43	Cow Respiratory Disease					
	104	32	Cow Abortion					
	97	27	Twinning					
	106	13	Cystic Ovary					
	N/A	N/A	Heifer Livability	0.9	63			
	92	37	Calf Respiratory Disease					
	111	48	Calf Scours					
	108	45	Calf Livability					