

ROMPEN-RED

7H015427
HO840003200914543

Born On: August 15, 2019
Beta-casein: A1A2
Kappa-casein: BB
EFI: 10.4%
aAa: 234



TRENT-WAY-JS ROMPEN-RED-ET TP TC TY TV TL TD TE HH1T HH2T HH3T HH4T HH5T HH6T

ALTUVE*RC X SPLENDID-P*RC X SILVER

Sire: PEAK ALTAALTUVE-ET
Dam: TRENT-WAY-JS REDGIRL-RED-ET EX-92
6-05 2X 365D 17,903 kgM 4.0% 715 kgF 3.2% 572 kgP
MGS: PINE-TREE SPLENDID-P-ET

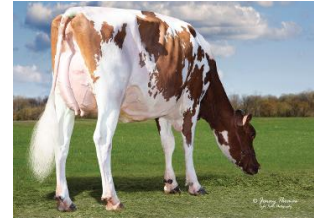
Daughter Average:
12,071 kgM 490 kgF 4.10%F 391 kgP 3.20%M



Trent-Way Reach It-ET



Erbacres Ainsley Red



Is-A-Bell-CA V 10476-Red-TW

INDEXES

TPI	2654
NM\$	46
CM\$	27
GM\$	9
Grazing Pro \$	-378
Feed Efficiency (\$)	-17
Feed Saved/Rel. %	61/56
HHP\$	-28
DWP\$	37
WT\$	22
CW\$	-16

PRODUCTION

PTA Milk (lbs)	787
PTA Protein (lbs)	7
PTA Protein (%)	-0.07
PTA Fat (lbs)	-19
PTA Fat (%)	-0.19
Production Reliability %	99
Dtrs/Herds	4917/1662
Combined Fat & Protein	-12

TYPE

PTA Type	1.92
Udder Composite	1.70
Feet & Leg Composite	1.32
Body Weight Composite	-0.31
Dairy Composite	0.53
Type Reliability %	99
Dtrs/Herds	1854/634

DAUGHTER FERTILITY

Fertility Index/Rel. %	-0.7/95
DPR/Rel. %	-1.0/95
HCR/Rel. %	2.1/94
CCR/Rel. %	-2.1/95

MANAGEMENT

Residual Feed Intake/Rel. %	-11/30
SCE/Rel. %	1.2/98
Observations (Service Sire)	10221
DCE/Rel. %	1.8/92
Observations (Daughter)	769
Gestation Length/Rel. %	-0.1/99
Early First Calving/Rel. %	3.8/91
SSB	3.7
DSB	3.6
Productive Life/Rel. %	1.4/95
Livability/Rel. %	-0.5/83
SCS/Rel. %	2.84/98
Milking Speed/Rel. %	6.86/95

CDCB/HA TYPE TRAITS

Trait	Value	Rel. %	Target
Stature	short	1.12	tall
Strength	frail	-0.02	strong
Body Depth	shallow	0.39	deep
Dairy Form	tight ribbed	1.44	open ribbed
Rump Width	narrow	0.54	wide
Rump Angle	high pins	-1.05	sloped
Rear Leg (side view)	posty	1.47	sickled
Rear Leg (rear view)	hock-in	1.49	straight
Foot Angle	low angle	0.70	steep angle
Feet & Leg Score	low	1.56	high
Fore Udder	loose	1.82	strong
Rear Udder Height	low	2.65	high
Rear Udder Width	narrow	1.29	wide
Udder Cleft	weak	0.65	strong
Udder Depth	deep	2.31	shallow
Front Teat Placement	wide	1.15	close
Rear Teat Placement	wide	0.27	close
Teat Length	short	-0.57	long

Value	Rel. %	ZOOTIS	WELLNESS TRAITS	Value	Rel. %	CDCB
102	67		Mastitis	0.7	86	
101	71		Retained Placenta	0.2	85	
102	72		Metritis	0.8	84	
100	73		Hypocalcemia/Milk Fever	-0.1	70	
96	72		Ketosis	-0.2	84	
99	62		Lameness			
93	67		Displaced Abomasum	-0.2	90	
97	68		Cow Respiratory Disease			
102	55		Cow Abortion			
104	70		Twinning			
99	29		Cystic Ovary			
N/A	N/A		Heifer Livability	0.7	76	
89	67		Calf Respiratory Disease			
104	74		Calf Scours			
98	78		Calf Livability			