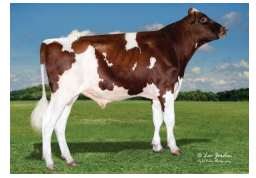


# REED-RED

7H017661  
HO840003278713082

Born On: January 25, 2024  
Beta-casein: A1A2  
Kappa-casein: BB  
EF1: 10.2%  
aAa: 321



TRENT-WAY REED-RED-ET TP TM TC TY TV TL TD TE HH1T HH2T HH3T HH4T HH5T HH6T

HULU\*RC X RANGER-RED X SALVO RDC

Sire: SIEMERS WOLF HULU 37006-ET  
Dam: TRENT-WAY REANGLE-RED-ET GP-83  
2-03 2X 365D 14,837 kgM 4.6% 681 kgF 3.5% 519 kgP  
MGS: 3STAR OH RANGER RED-ET



MGD Trent-Way-JS Rolvo-Red-ET



MGD Trent-Way-JS Rolvo-Red-ET

## INDEXES

TPI	2965
NM\$	310
CM\$	311
GM\$	282
Grazing Pro \$	-73
Feed Efficiency (\$)	60
Feed Saved/Rel. %	-54/46
HHP\$	329
DWP\$	313
WT\$	97
CW\$	-35

## PRODUCTION

PTA Milk (lbs)	694
PTA Protein (lbs)	18
PTA Protein (%)	-0.02
PTA Fat (lbs)	20
PTA Fat (%)	-0.03
Production Reliability %	80
Dtrs/Herds	0/0
Combined Fat & Protein	38

## TYPE

PTA Type	2.42
Udder Composite	1.66
Feet & Leg Composite	1.75
Body Weight Composite	0.65
Dairy Composite	1.57
Type Reliability %	79

## DAUGHTER FERTILITY

Fertility Index/Rel. %	0.4/75
DPR/Rel. %	0.3/75
HCR/Rel. %	1.6/75
CCR/Rel. %	0.3/74

## MANAGEMENT

Residual Feed Intake/Rel. %	-51/26
SCE/Rel. %	1.5/63
Observations (Service Sire)	0
DCE/Rel. %	1.9/60
Observations (Daughter)	0
Gestation Length/Rel. %	0.0/73
Early First Calving/Rel. %	-0.2/72
SSB	3.4
DSB	3.5
Productive Life/Rel. %	2.8/75
Livability/Rel. %	0.9/72
SCS/Rel. %	2.79/76
Milking Speed/Rel. %	6.83/62

## CDCB/HA TYPE TRAITS

Trait	Value	Rel. %	Target
Stature	short		tall
Strength	frail	0.85	strong
Body Depth	shallow	1.59	deep
Dairy Form	tight ribbed	2.31	open ribbed
Rump Width	narrow	2.48	wide
Rump Angle	high pins	0.60	sloped
Rear Leg (side view)	posty	1.72	sickled
Rear Leg (rear view)	hock-in	2.27	straight
Foot Angle	low angle	1.89	steep angle
Feet & Leg Score	low	2.20	high
Fore Udder	loose	2.23	strong
Rear Udder Height	low	2.50	high
Rear Udder Width	narrow	2.43	wide
Udder Cleft	weak	1.71	strong
Udder Depth	deep	1.55	shallow
Front Teat Placement	wide	1.87	close
Rear Teat Placement	wide	2.05	close
Teat Length	short	-0.50	long

	ZOETIS		WELLNESS TRAITS	CDCB	
	Value	Rel. %		Value	Rel. %
	107	40	Mastitis	2.2	71
	94	29	Retained Placenta	-0.1	68
	93	36	Metritis	0.7	68
	91	51	Hypocalcemia/Milk Fever	0	59
	91	51	Ketosis	0.1	67
	103	31	Lameness		
	92	46	Displaced Abomasum	-0.2	70
	99	50	Cow Respiratory Disease		
	98	39	Cow Abortion		
	94	35	Twinning		
	103	19	Cystic Ovary		
	N/A	N/A	Heifer Livability	0.1	61
	90	41	Calf Respiratory Disease		
	93	40	Calf Scours		
	102	52	Calf Livability		