

# 551HO03709 ATTRACTION-RED

Reg: HO840003147207032  
RHA: 99%

DOB: 09/25/2017  
aAa: 321 HHC HRR AA A1A2

08/2020 CDCB SUMMARY - GENOMIC				NM\$ -43
Milk	-739	81%R	Fluid Merit \$	-116
Fat	-11	+0.06%	Cheese Merit \$	-11
Protein	-1	+0.08%	Grazing Merit \$	-22
SCS	3.07	79%R	Gestation Len. +1 Fert. Index	-0.6
PL	-1.1	77%R	Livability -2.4 Mastitis	-0.2
DPR	-0.1	76%R	EFI 6.7% gEFI 9.0%	
HCR	+1.2			
CCR	-1.1		0 Dtrs 0 Herds 100% US	

08/2020 CALVING SUMMARY				SCE 2.4 %
Sire Calving Ease	2.4%	81%R	180 Obs	
Daughter Calving Ease	2.6%	69%R	0 Obs	
Sire Stillbirth	6.8%	62%R	180 Obs	
Daughter Stillbirth	6.3%	62%R	0 Obs	

08/2020 HA TYPE SUMMARY				TPI +2101
PTAT +2.39 80%R UDC+2.34 FLC+2.06 BSC +1.23 0 D / 0 H				
			-2 -1 0 1 2	
Stature	+2.19	Tall		
Strength	+1.29	Strong		
Body Depth	+1.67	Deep		
Dairy Form	+1.51	Open Rib		
Rump Angle	+0.75	Sloped		
Thurl Width	+2.18	Wide		
Rear Legs-Side	-0.97	Posty		
Rear Legs-Rear	+2.31	Straight		
Foot Angle	+2.73	Steep		
Feet & Legs Score	+2.39	High		
F. Udder Attachment	+2.45	Strong		
Rear Udder Height	+3.84	High		
Rear Udder Width	+3.53	Wide		
Udder Cleft	+1.79	Strong		
Udder Depth	+1.51	Shallow		
Front Teat Placement	+1.63	Close		
Rear Teat P. Rear	+1.88	Close		
Teat Length	-0.80	Short		

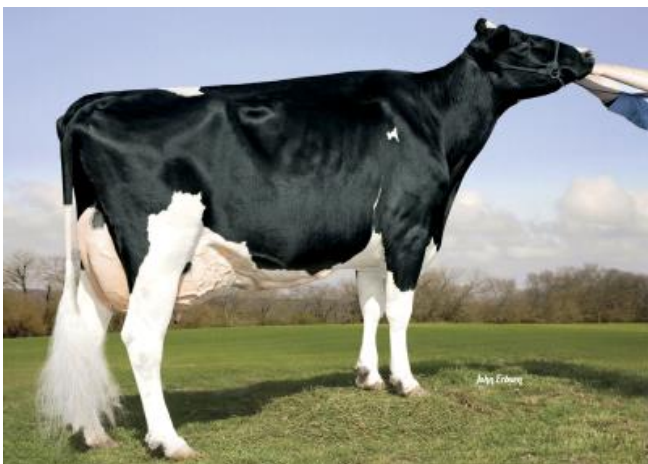
Apple-Pts Attraction-Red-ET CV RC TC  
Imac\*RC x Regiment-Red x Durham



**Sire:** Farnear Apples Imac\*RC-ET RC TL TV TD  
**Dam:** KHW Regiment Apple-Red-ET CV EX-96 3E DOM  
 09-01 2x 365d 36750m 4.3 1582f 3.3 1211p  
**MGS:** Carousel Regiment-RED-ET TV TL  
**MGD:** Kamps-Hollow Altitude-ET RC CV TL EX-95 2E DOM  
 07-00 2x 365d 39690m 4.7 1849f 3.3 1310p  
**MGGs:** Regancrest Elton Durham-ET TR CV TL EX-90  
**MGGD:** Clover-Mist Alisha-ET RC EX-93 3E DOM  
 08-07 2x 365d 36920m 4.2 1553f 3.2 1188p



Dam: KHW Regiment Apple-Red-ET



MGD: Kamps-Hollow Altitude-ET



MGGD: Clover-Mist Alisha-ET