

SELECT 7H014920

HO840003149135073

AVANT-GARDE UNIX SELECT-ET TR TP TC TY TV TL TD HH1T HH2T HH3T HH4T HH5T HH6T

UNIX X MCCUTCHEN X LAVANGUARD

Born On: June 30, 2018

Beta-casein: A1A2

Kappa-casein: AE

EF1: 8.1%

aAa: 423



Sire: CROTEAU LESPERRON UNIX

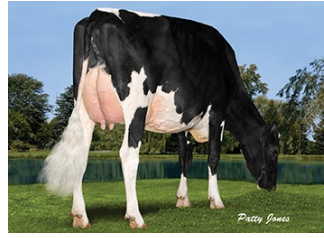
Dam: WALNUTLAWN MCCUTCHEN SUMMER-ET EX-94

1-10 2X 365D 12248 kgM 4.6% 1237 kgF 3.1% 380 kgP

MGS: DE-SU BKM MCCUTCHEN 1174-ET



DAM Walnutlawn McCutchen Summer



MGD Misty-Springs Lavanguard Sue

INDEXES

TPI	2367
NM\$	164
CM\$	182
Feed Efficiency (%)	27
DWP\$	22
WT\$	-31
CW\$	32

PRODUCTION

PTA Milk (lbs)	-275
PTA Protein (lbs)	1
PTA Protein (%)	0.03
PTA Fat (lbs)	35
PTA Fat (%)	0.16
Production Reliability %	80
Dtrs/Herds	0/0

TYPE

PTA Type	3.14
Udder Composite	2.64
Feet & Leg Composite	0.98
Body Weight Composite	2.45
Dairy Composite	2.60
Type Reliability %	79
Dtrs/Herds	0/0

DAUGHTER FERTILITY

Fertility Index/Rel. %	-0.4
DPR/Rel. %	-0.8/76
HCR/Rel. %	-0.5/73
CCR/Rel. %	-2.1/76

CDCB/HA TYPE TRAITS

Stature	short	3.75	tall
Strength	frail	2.50	strong
Body Depth	shallow	2.72	deep
Dairy Form	tight ribbed	1.91	open ribbed
Rump Width	narrow	2.77	wide
Rump Angle	high pins	0.04	sloped
Rear Leg (side view)	posty	0.34	sickled
Rear Leg (rear view)	hock-in	1.29	straight
Foot Angle	low angle	1.82	steep angle
Feet & Leg Score	low	1.81	high
Fore Udder	loose	3.77	strong
Rear Udder Height	low	3.56	high
Rear Udder Width	narrow	3.28	wide
Udder Cleft	weak	2.52	strong
Udder Depth	deep	3.55	shallow
Front Teat Placement	wide	1.98	close
Rear Teat Placement	wide	1.56	close
Teat Length	short	-1.01	long

MANAGEMENT TRAITS

SCE/Rel. %	2.0/70
DCE/Rel. %	2.3/69
Gestation Length/Rel. %	0.4/75
Early First Calving/Rel. %	4.3/73
SSB/Rel. %	4.8/62
DSB/Rel. %	5.9/63
Productive Life/Rel. %	-0.4/77
Livability/Rel. %	-2.1/72
SCS/Rel. %	2.86/78
Milking Speed/Rel. %	102/80

SIRE FERTILITY

SCR/Rel. %	0.0/85
------------	--------

ZOETIS WELLNESS TRAITS CDCB

	Value	Rel. %		Value	Rel. %
	101	50	Mastitis	1.0	71
	102	52	Retained Placenta	0.0	59
	96	50	Metritis	-0.1	60
	99	41	Hypocalcemia/Milk Fever	0.2	49
	100	50	Ketosis	0.6	56
	91	49	Displaced Abomasum	-0.3	58
	96	49	Lameness		
	97	40	Cow Abortion		
	107	45	Twinning		
	99	30	Cystic Ovary		
	100	44	Cow Respiratory Disease		
	98	40	Calf Respiratory		
	108	42	Calf Scours		
	105	46	Calf Livability		