



AltaTOPSHOT

011HO11779

BOMAZ ALTATOPSHOT-ET

SUPERSHOT X AltaEMBASSY X ROBUST

HOUSAM000073953444 | DOB 6/10/2015

Kappa-Casein BB | Beta-Casein A2A2

Haplotypes HH1F HH2F HH3F HH4F HH5F HCDF HH6C

Genetic Codes TC TD TL TP TR TV TY

aAa 342 | DMS 246,456 | EFI 10.7 %

Current Proof USA-202008

CDCB & HA-USA Genetic Evaluations 08/2020

CONFORMATION Based on 444 Daughters in 111 Herds (95% Rel)

| | | | | | | |
|----------------|----|----|---|---|---|---------------|
| PTAT | | | | | | -0.15 |
| UDC | | | | | | -0.28 |
| FLC | | | | | | -0.72 |
| | -2 | -1 | 0 | 1 | 2 | |
| Stature | | | | | | -0.24 Short |
| Strength | | | | | | +0.05 Strong |
| Body Depth | | | | | | -0.35 Shallow |
| Dairy form | | | | | | +0.22 Open |
| Rump Angle | | | | | | +0.27 Sloped |
| Thurl Width | | | | | | +0.24 Wide |
| R. Legs-S View | | | | | | +0.60 Sickle |
| R. Legs-R View | | | | | | -1.10 Hock In |
| Foot Angle | | | | | | -0.59 Low |
| F&L Score | | | | | | -0.60 Low |
| F. Udder Att. | | | | | | -0.16 Loose |
| R. Udder Ht. | | | | | | -0.03 Low |
| R. Udder Wid. | | | | | | -0.03 Narrow |
| Udder Cleft | | | | | | +0.22 Strong |
| Udder Depth | | | | | | -1.09 Deep |
| F. Teat Place | | | | | | -0.64 Wide |
| R. Teat Place | | | | | | -0.20 Wide |
| Teat Length | | | | | | +0.29 Long |

TPI **2768** NM\$ **732**



PRODUCTION

| | | |
|--------------|-----------|---------|
| Milk | +1626 Lbs | 99% Rel |
| Protein | +64 Lbs | +0.05% |
| Fat | +89 Lbs | +0.09% |
| Cheese Merit | +\$763 | |

Based on 2654 Daughters in 369 Herds (66% US Daughters)

| | | |
|--------------------------------|------------|------|
| Milk Production - US daughters | +29690 Lbs | 66% |
| Fat Yield - US daughters | +1213 Lbs | 4.1% |
| Protein Yield - US daughters | +949 Lbs | 3.2% |

HEALTH TRAITS

| | | | |
|--------------------|-------|-------------------------|------|
| Productive Life | +4.7 | Daughter Pregnancy Rate | -0.3 |
| Livability | +2.1 | Cow Conception Rate | -0.6 |
| Somatic Cell Score | +2.71 | Heifer Conception Rate | -1.2 |
| Mastitis | 2.0% | Metritis | 0.6% |
| Ketosis | 1.7% | Displaced Abomasum | 0.3% |
| Retained Placenta | | Milk Fever | 0.1% |

Pedigree

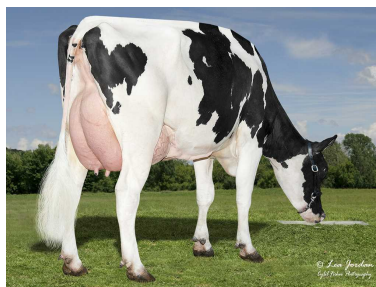
| | |
|------|-------------------------|
| SIRE | COGENT SUPERSHOT |
| DAM | BOMAZ FRIDO 6185 |
| MGS | APINA ALTAEMBASSY |
| MGD | BOMAZ ROBUST 5547-ET |
| MGGS | ROYLANE SOCRA ROBUST-ET |
| MGGD | BOMAZ MANOMAN 4929-ET |

CALVING TRAITS

| | | | | |
|---------------------|------|---------|-------|-----------------|
| Sire Calving Ease | 1.7% | 99% Rel | 11462 | Observ |
| Dtr Calving Ease | 2.1% | 95% Rel | 1057 | Observ 1381dtr. |
| Sire stillbirth | 4.1% | 98% Rel | 10695 | Observ |
| Daughter stillbirth | 3.9% | 95% Rel | 1023 | Observ 1392dtr. |



Bomaz Topshot 7745
Bomaz Farms; Hammond, WI



Bomaz Topshot 7745
Bomaz Farms; Hammond, WI



Bomaz Topshot 277
Bomaz Farms; Hammond, WI