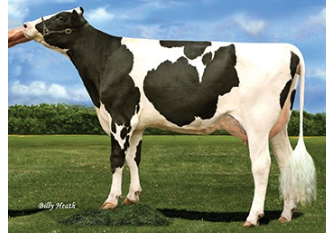


CHERRYPENCOL TREATY-ET TR TP TC TL TD HH1T HH2T HH3T HH4T HH5T HH6T

RIVETING X JEDI X COMMANDER

Sire: S-S-I BG FRZZLD RIVETING-ET

MGS: S-S-I MONTROSS JEDI-ET



DAM Cherry-Acres Jedi Lauri-ET

INDEXES

TPI	2947
NM\$	774
CM\$	824
Feed Efficiency (\$)	184
DWP\$	990
WT\$	147
CW\$	24

PRODUCTION

PTA Milk (lbs)	762
PTA Protein (lbs)	49
PTA Protein (%)	0.09
PTA Fat (lbs)	69
PTA Fat (%)	0.14
Production Reliability %	76
Dtrs/Herds	0/0

TYPE

PTA Type	1.48
Udder Composite	2.04
Feet & Leg Composite	0.42
Body Weight Composite	-0.62
Dairy Composite	0.44
Type Reliability %	75
Dtrs/Herds	0/0

DAUGHTER FERTILITY

Fertility Index/Rel. %	1.7
DPR/Rel. %	1.1/73
HCR/Rel. %	2.3/69
CCR/Rel. %	2.0/73

CDCB/HA TYPE TRAITS

Trait	Value	Rel. %	Target
Stature	short	0.64	tall
Strength	frail	-0.44	strong
Body Depth	shallow	-0.40	deep
Dairy Form	tight ribbed	0.86	open ribbed
Rump Width	narrow	-0.08	wide
Rump Angle	high pins	0.71	sloped
Rear Leg (side view)	posty	-1.10	sickled
Rear Leg (rear view)	hock-in	0.33	straight
Foot Angle	low angle	0.79	steep angle
Feet & Leg Score	low	0.60	high
Fore Udder	loose	2.33	strong
Rear Udder Height	low	2.49	high
Rear Udder Width	narrow	2.29	wide
Udder Cleft	weak	0.99	strong
Udder Depth	deep	2.07	shallow
Front Teat Placement	wide	1.24	close
Rear Teat Placement	wide	1.32	close
Teat Length	short	-1.37	long

SIRE FERTILITY

SCR/Rel. %

ZOETIS

WELLNESS TRAITS

CDCB

	Value	Rel. %		Value	Rel. %
	101	44	Mastitis	2.2	67
	105	45	Retained Placenta	0.1	55
	105	44	Metritis	1.1	57
	91	37	Hypocalcemia/Milk Fever	0.1	46
	107	44	Ketosis	2.0	52
	101	44	Displaced Abomasum	0.6	54
	108	44	Lameness		
	99	31	Cow Abortion		
	101	37	Twinning		
	103	26	Cystic Ovary		
	107	37	Cow Respiratory Disease		
	104	35	Calf Respiratory		
	105	38	Calf Scours		
	101	40	Calf Livability		