

JACOBY 250H012589

HO840003013614066

CYCLE DOORMAN JACOBY-ET TR TP TC TY TV TL TD HH5C HH1T HH2T HH3T HH4T HH6T

DOORMAN X GOLD CHIP X LION KING

Born On: March 24, 2014

Beta-casein: A2A2

Kappa-casein: AA

EFl: 7.6%

aAa: 234



Sire: VAL-BISSON DOORMAN

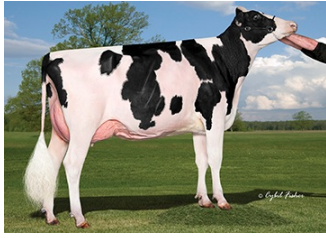
Dam: BRYERSQUART GCHIP JAIL-P-ET EX-90

1-11 3X 341D 14324 kgM 3.9% 559 kgF 2.9% 420 kgP

MGS: MR CHASSITY GOLD CHIP-ET

Daughter Average:

11983 kgM 471 kgF 3.90%F 366 kgP 3.10%P



Valley-Drive Jacoby Tarawa



Ziems Jacoby Los Angles-ET



Brabantdale Jacoby Daughters

INDEXES

TPI	1834
NM\$	-244
CM\$	-250
Feed Efficiency (\$)	-104
DWP\$	-637
WT\$	-112
CW\$	0

PRODUCTION

PTA Milk (lbs)	-893
PTA Protein (lbs)	-34
PTA Protein (%)	-0.02
PTA Fat (lbs)	-20
PTA Fat (%)	0.05
Production Reliability %	98
Dtrs/Herds	3286/1376

TYPE

PTA Type	2.96
Udder Composite	2.60
Feet & Leg Composite	1.20
Body Weight Composite	2.32
Dairy Composite	2.19
Type Reliability %	98
Dtrs/Herds	1759/834

DAUGHTER FERTILITY

Fertility Index/Rel. %	-2.9
DPR/Rel. %	-2.4/93
HCR/Rel. %	-0.6/91
CCR/Rel. %	-2.8/92

MANAGEMENT TRAITS

SCE/Rel. %	3.1/98
DCE/Rel. %	3.8/93
Gestation Length/Rel. %	0.3/99
Early First Calving/Rel. %	-8.5/85
SSB/Rel. %	6.2/94
DSB/Rel. %	8.2/90
Productive Life/Rel. %	-0.8/92
Livability/Rel. %	-3.4/76
SCS/Rel. %	2.68/97
Milking Speed/Rel. %	100/98

CDCB/HA TYPE TRAITS

Stature	short	3.15	tall
Strength	frail	2.26	strong
Body Depth	shallow	2.17	deep
Dairy Form	tight ribbed	1.45	open ribbed
Rump Width	narrow	2.82	wide
Rump Angle	high pins	0.76	sloped
Rear Leg (side view)	posty	-0.21	sickled
Rear Leg (rear view)	hock-in	2.07	straight
Foot Angle	low angle	2.05	steep angle
Feet & Leg Score	low	1.67	high
Fore Udder	loose	4.31	strong
Rear Udder Height	low	3.02	high
Rear Udder Width	narrow	2.78	wide
Udder Cleft	weak	2.04	strong
Udder Depth	deep	3.45	shallow
Front Teat Placement	wide	2.73	close
Rear Teat Placement	wide	2.80	close
Teat Length	short	-0.76	long

SIRE FERTILITY

SCR/Rel. %

ZOETIS

WELLNESS TRAITS

CDCB

	Value	Rel. %		Value	Rel. %
	103	55	Mastitis	2.5	85
	92	53	Retained Placenta	-0.5	68
	86	53	Metritis	-1.0	71
	96	43	Hypocalcemia/Milk Fever	0.0	57
	90	51	Ketosis	-0.1	67
	83	51	Displaced Abomasum	-0.9	69
	94	52	Lameness		
	88	42	Cow Abortion		
	94	47	Twinning		
	97	31	Cystic Ovary		
	95	46	Cow Respiratory Disease		
	103	44	Calf Respiratory		
	104	46	Calf Scours		
	96	50	Calf Livability		