

# SOLUTION

## 14HO14085

HO840003139490455

FUSTEAD S-S-I SOLUTION-ET TR TP TC TY TV TL TD HH1T HH2T HH3T HH4T HH5T HH6T

FRAZZLED X RUBICON X OAK

Sire: MELARRY JOSUPER FRAZZLED-ET

Dam: FUSTEAD RUBICON LAVON-ET VG-85

2-05 3X 365D 16629 kgM 4.9% 814 kgF 3.5% 574 kgP

MGS: EDG RUBICON-ET

Born On: February 22, 2017

Beta-casein: A2A2

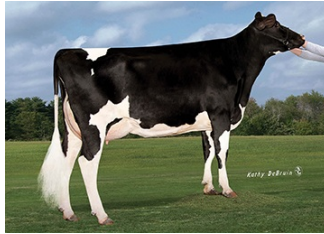
Kappa-casein: AB

EF1: 9.0%

aAa: 423



DAM Fustead Rubicon Lavon-ET



MGD Fustead Oak Lafonda-ET



MGD Glen-Toctin Bolt Lucille-ET

### INDEXES

TPI	2863
NM\$	758
CM\$	766
Feed Efficiency (%)	191
DWP\$	915
WT\$	64
CW\$	35

### DAUGHTER FERTILITY

Fertility Index/Rel. %	-0.8
DPR/Rel. %	-1.6/77
HCR/Rel. %	2.2/78
CCR/Rel. %	-1.0/77

### MANAGEMENT TRAITS

SCE/Rel. %	2.6/98
DCE/Rel. %	1.9/69
Gestation Length/Rel. %	0.3/74
Early First Calving/Rel. %	2.5/72
SSB/Rel. %	5.2/95
DSB/Rel. %	3.2/62
Productive Life/Rel. %	5.8/77
Livability/Rel. %	2.0/70
SCS/Rel. %	2.66/78
Milking Speed/Rel. %	101/74

### SIRE FERTILITY

SCR/Rel. %	-1.0/60
------------	---------

### PRODUCTION

PTA Milk (lbs)	1619
PTA Protein (lbs)	49
PTA Protein (%)	0.00
PTA Fat (lbs)	88
PTA Fat (%)	0.09
Production Reliability %	80
Dtrs/Herds	0/0

### TYPE

PTA Type	1.21
Udder Composite	1.26
Feet & Leg Composite	1.02
Body Weight Composite	-0.29
Dairy Composite	0.24
Type Reliability %	79
Dtrs/Herds	0/0

### CDCB/HA TYPE TRAITS

Trait	Value	Rel. %	Target
Stature	short	0.20	tall
Strength	frail	-0.14	strong
Body Depth	shallow	-0.37	deep
Dairy Form	tight ribbed	0.44	open ribbed
Rump Width	narrow	0.01	wide
Rump Angle	high pins	0.33	sloped
Rear Leg (side view)	posty	0.47	sickled
Rear Leg (rear view)	hock-in	0.94	straight
Foot Angle	low angle	0.69	steep angle
Feet & Leg Score	low	1.03	high
Fore Udder	loose	1.31	strong
Rear Udder Height	low	1.57	high
Rear Udder Width	narrow	1.44	wide
Udder Cleft	weak	0.67	strong
Udder Depth	deep	0.86	shallow
Front Teat Placement	wide	1.20	close
Rear Teat Placement	wide	1.43	close
Teat Length	short	-0.63	long

### ZOETIS

### WELLNESS TRAITS

### CDCB

	Value	Rel. %		Value	Rel. %
	97	52	Mastitis	1.2	70
	102	54	Retained Placenta	0.0	61
	105	53	Metritis	0.6	62
	101	43	Hypocalcemia/Milk Fever	0.1	52
	109	52	Ketosis	1.9	58
	102	51	Displaced Abomasum	1.1	60
	107	51	Lameness		
	97	38	Cow Abortion		
	97	45	Twinning		
	99	36	Cystic Ovary		
	99	46	Cow Respiratory Disease		
	107	47	Calf Respiratory		
	103	59	Calf Scours		
	103	50	Calf Livability		