



AltaTOP-RED

011HO00594

KOEPON ALTATOP-RED-ET

SALVATORE RC X DELTA X CASHCOIN

HONLDM000648499675 | DOB 4/25/2018

Kappa-Casein AE | Beta-Casein A1A2

Haplotypes HH1F HH2F HH3F HH4F HH5F HCDF HH6F

Genetic Codes TC TD TL TP TV TY

aAa 243651 | EFI 10.6 %

Current Proof USA-202008

CDCB & HA-USA Genetic Evaluations 08/2020

CONFORMATION Based on 0 Daughters in 0 Herds (78% Rel)

Trait	Score	Rel
PTAT	+1.73	
UDC	+2.15	
FLC	+1.16	
Stature	+1.30	Tall
Strength	+0.74	Strong
Body Depth	+0.50	Deep
Dairy form	+0.48	Open
Rump Angle	+0.58	Sloped
Thurl Width	+0.08	Wide
R. Legs-S View	-0.76	Posty
R. Legs-R View	+1.30	Straight
Foot Angle	+1.54	Steep
F&L Score	+1.37	High
F. Udder Att.	+2.71	Strong
R. Udder Ht.	+2.98	High
R. Udder Wid.	+2.74	Wide
Udder Cleft	+0.64	Strong
Udder Depth	+1.97	Shallow
F. Teat Place	+0.71	Close
R. Teat Place	+0.69	Close
Teat Length	-0.64	Short

TPI **2595** NM\$ **476**



PRODUCTION

Trait	Value	Rel
Milk	+1071 Lbs	79%
Protein	+28 Lbs	-0.02%
Fat	+28 Lbs	-0.04%
Cheese Merit	+\$475	

Based on 0 Daughters in 0 Herds (100% US Daughters)

Milk Production - US daughters	
Fat Yield - US daughters	
Protein Yield - US daughters	

HEALTH TRAITS

Productive Life	+5.8	Daughter Pregnancy Rate	+0.4
Livability	+3.0	Cow Conception Rate	0.7
Somatic Cell Score	+2.77	Heifer Conception Rate	-0.4
Mastitis	1.5%	Metritis	1.8%
Ketosis	1.9%	Displaced Abomasum	0.9%
Retained Placenta	0.1%	Milk Fever	0.1%

Pedigree

SIRE	MR SALVATORE RC-ET
DAM	DELTA SANNE RF-ET
MGS	MR MOGUL DELTA 1427-ET
MGD	MS SUNVIEW COIN SUNGLOW-ET
MGGs	FARNEAR-TBR-BH CASHCOIN-ET
MGGD	DYMENTHOLM SUNVIEW SUNDAY

CALVING TRAITS

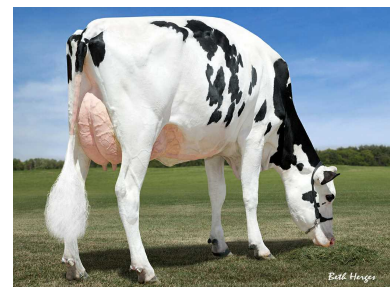
Sire Calving Ease	1.7%	62% Rel	0 Observ
Dtr Calving Ease	2.1%	60% Rel	0 Observ 0 dtr.
Sire stillbirth	5.0%	58% Rel	0 Observ
Daughter stillbirth	5.0%	58% Rel	0 Observ 0 dtr.



MGD: MS Sunview Coin Sunglow-ET



MGGD: Dymentholm Sunview Sunday



MGGD: Dymentholm Sunview Sunday