

# ACCELODIN

14HO07828

HO840003130641794

PEAK ACCELODIN-ET TR TP TY TV TL TD HH1T HH2T HH3T HH4T HH5T HH6T

## HOTROD X RANSOM X ROBUST

Sire: GLEN-D-HAVEN ALTAHOTROD

Dam: BRYHILL RANSOM MARQUISSE-ET GP-83

2-02 2X 365D 12696 kgM 4.6% 580 kgF 3.6% 451 kgP

MGS: DE-SU RANSOM-ET

Born On: May 29, 2015

Beta-casein: A2A2

Kappa-casein: AB

EFI: 8.4%

aAa: 423

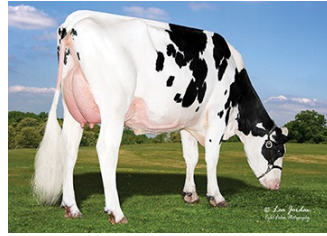


Daughter Average:

13569 kgM 567 kgF 4.20%F 432 kgP 3.20%P



DAM Bryhill Ransom Marquisse-ET



Rolling Green Odin 1587-Grade



DAM Bryhill Ransom Marquisse-ET

### INDEXES

TPI	2811
NM\$	665
CM\$	714
Feed Efficiency (%)	211
DWP\$	913
WT\$	160
CW\$	-20

### PRODUCTION

PTA Milk (lbs)	584
PTA Protein (lbs)	46
PTA Protein (%)	0.10
PTA Fat (lbs)	100
PTA Fat (%)	0.27
Production Reliability %	93
Dtrs/Herds	402/146

### TYPE

PTA Type	1.44
Udder Composite	0.25
Feet & Leg Composite	0.04
Body Weight Composite	0.66
Dairy Composite	2.16
Type Reliability %	87
Dtrs/Herds	25/9

### DAUGHTER FERTILITY

Fertility Index/Rel. %	0.9
DPR/Rel. %	0.4/87
HCR/Rel. %	0.1/85
CCR/Rel. %	0.2/77

### CDCB/HA TYPE TRAITS

Stature	short	2.89	tall
Strength	frail	1.09	strong
Body Depth	shallow	1.93	deep
Dairy Form	tight ribbed	2.64	open ribbed
Rump Width	narrow	1.76	wide
Rump Angle	high pins	2.49	sloped
Rear Leg (side view)	posty	0.90	sickled
Rear Leg (rear view)	hock-in	0.47	straight
Foot Angle	low angle	0.70	steep angle
Feet & Leg Score	low	0.72	high
Fore Udder	loose	0.90	strong
Rear Udder Height	low	0.92	high
Rear Udder Width	narrow	0.85	wide
Udder Cleft	weak	1.74	strong
Udder Depth	deep	0.31	shallow
Front Teat Placement	wide	2.55	close
Rear Teat Placement	wide	2.59	close
Teat Length	short	-1.16	long

### MANAGEMENT TRAITS

SCE/Rel. %	1.5/97
DCE/Rel. %	2.0/78
Gestation Length/Rel. %	-2.8/96
Early First Calving/Rel. %	6.1/74
SSB/Rel. %	6.0/93
DSB/Rel. %	6.0/67
Productive Life/Rel. %	3.6/87
Livability/Rel. %	1.2/72
SCS/Rel. %	2.88/91
Milking Speed/Rel. %	107/87

### SIRE FERTILITY

SCR/Rel. %	1.4/96
------------	--------

### ZOETIS

### WELLNESS TRAITS

### CDCB

	Value	Rel. %		Value	Rel. %
	107	57	Mastitis	1.7	72
	97	59	Retained Placenta	0.1	62
	103	58	Metritis	1.2	63
	102	49	Hypocalcemia/Milk Fever	0.0	51
	97	54	Ketosis	0.4	58
	92	52	Displaced Abomasum	-0.3	61
	106	56	Lameness		
	101	44	Cow Abortion		
	105	50	Twinning		
	93	38	Cystic Ovary		
	93	49	Cow Respiratory Disease		
	101	49	Calf Respiratory		
	96	84	Calf Scours		
	97	72	Calf Livability		