

# RONALD\*RC

250HO14465

HO840003142352034

Born On: June 13, 2017

Beta-casein: A1A1

Kappa-casein: BB

EFl: 9.1%

aAa: 243



TRENT-WAY-JS RONALD-ET RC TP TC TY TV TL TD HH1T HH2T HH3T HH4T HH5T HH6T

SALVATORE RC X SILVER X NUMERO UNO

Sire: MR SALVATORE RC-ET

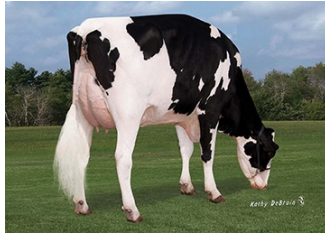
Dam: Y-WHISPER SILVER ROYALTY-ET VG-87

2-06 2X 351D 12637 kgM 5.0% 628 kgF 3.4% 425 kgP

MGS: SEAGULL-BAY SILVER-ET



DAM Y-Whisper Silver Royalty-ET



MGD Morningview Uno Regina-ET



MGGD Morningview Super Roxy

## INDEXES

TPI	2772
NM\$	589
CM\$	607
Feed Efficiency (%)	104
DWP\$	629
WT\$	79
CW\$	0

## DAUGHTER FERTILITY

Fertility Index/Rel. %	0.9
DPR/Rel. %	1.3/76
HCR/Rel. %	0.8/73
CCR/Rel. %	1.4/76

## MANAGEMENT TRAITS

SCE/Rel. %	1.7/93
DCE/Rel. %	2.2/70
Gestation Length/Rel. %	-2.0/75
Early First Calving/Rel. %	-1.9/72
SSB/Rel. %	5.0/83
DSB/Rel. %	4.6/64
Productive Life/Rel. %	5.5/77
Livability/Rel. %	2.5/70
SCS/Rel. %	2.72/79
Milking Speed/Rel. %	102/77

## SIRE FERTILITY

SCR/Rel. %	0.8/92
------------	--------

## PRODUCTION

PTA Milk (lbs)	949
PTA Protein (lbs)	36
PTA Protein (%)	0.02
PTA Fat (lbs)	46
PTA Fat (%)	0.03
Production Reliability %	80
Dtrs/Herds	0/0

## TYPE

PTA Type	2.10
Udder Composite	2.18
Feet & Leg Composite	2.06
Body Weight Composite	0.95
Dairy Composite	1.26
Type Reliability %	79
Dtrs/Herds	0/0

## CDCB/HA TYPE TRAITS

Stature	short	1.90	tall
Strength	frail	0.99	strong
Body Depth	shallow	0.76	deep
Dairy Form	tight ribbed	0.87	open ribbed
Rump Width	narrow	0.85	wide
Rump Angle	high pins	0.12	sloped
Rear Leg (side view)	posty	-1.11	sickled
Rear Leg (rear view)	hock-in	2.54	straight
Foot Angle	low angle	2.56	steep angle
Feet & Leg Score	low	2.26	high
Fore Udder	loose	2.90	strong
Rear Udder Height	low	3.28	high
Rear Udder Width	narrow	3.02	wide
Udder Cleft	weak	0.07	strong
Udder Depth	deep	2.16	shallow
Front Teat Placement	wide	0.95	close
Rear Teat Placement	wide	-0.07	close
Teat Length	short	0.18	long

## ZOETIS

## WELLNESS TRAITS

## CDCB

	Value	Rel. %		Value	Rel. %
	101	44	Mastitis	1.6	70
	107	46	Retained Placenta	0.4	59
	105	44	Metritis	1.2	60
	102	37	Hypocalcemia/Milk Fever	0.2	49
	111	43	Ketosis	2.6	55
	100	43	Displaced Abomasum	0.5	58
	100	43	Lameness		
	102	31	Cow Abortion		
	104	36	Twinning		
	93	25	Cystic Ovary		
	100	36	Cow Respiratory Disease		
	93	34	Calf Respiratory		
	105	47	Calf Scours		
	102	41	Calf Livability		