

WENDLAND HOLSTEINS PROMOTION



DEU 000361214538 • German Reg. No. 10.833404

born: 05/04/2019

Breeder: Jürgen Hintze, Trebel, Germany

aAa 243 K-Cn: AB β-Cn: A2/A2



INCREDIBLE MILK YIELD · FOOT & LEG IMPROVER · SUPERB LONGEVITY

Progenesis Prosperous (Magnus x Supershot) Wendland Holsteins Lucia VG-86 1 lac 4449 3.91 174 3.44 153 (100 days)	Westcoast Kerrigan (S.: Kingboy) Wendland Holsteins Lucy VG-86 1 lac 9747 3.74 365 3.42 333	De-Su 11236 Balisto (S.: Bookem) DG Scream & Shout VG-85 2 lac 9966 4.88 486 3.70 369 best lac 1 12116 4.72 572 3.52 427
--	---	---

gRZG	161	gRZ€	2625€
Total Merit Index		Economic Total Merit	

gRZM	Milk Production Index	156
Daugh. 0 / Herds 0	Rel. 73%	
Milk kg	Fat %	Fat kg
+2377	+0.00	+93
	Protein %	Protein kg
	-0.08	+71

gRZE	Total Conformation Index	120
Daugh. 0 / Herds 0	Rel. 61%	
Dairy Type	Body	Feet & Legs
120	107	114
	Udder	114

gRZHealth	Total Health Index	Rel. 56%	116
RZudderfit	RZhoof	DDcontrol	RZrepro
113	113	110	107
			RZmetabol
			111

gRZN	Functional Herd Life	Rel. 66%	119
-------------	----------------------	----------	------------

gRZS	Somatic Cell Count	Rel. 75%	120
-------------	--------------------	----------	------------

gRZD	Milking Speed	Rel. 70%	103
-------------	---------------	----------	------------

gRZR	Daughter Fertility	Rel. 53%	101
-------------	--------------------	----------	------------

gRZRobot	Robot Index	Rel. -%	-
-----------------	-------------	---------	----------

gRZcalfhealth	Calf Fitness	Rel. 45%	102
----------------------	--------------	----------	------------

gRZKd	Calving paternal	Rel. 62%	102
Calving Ease			Average

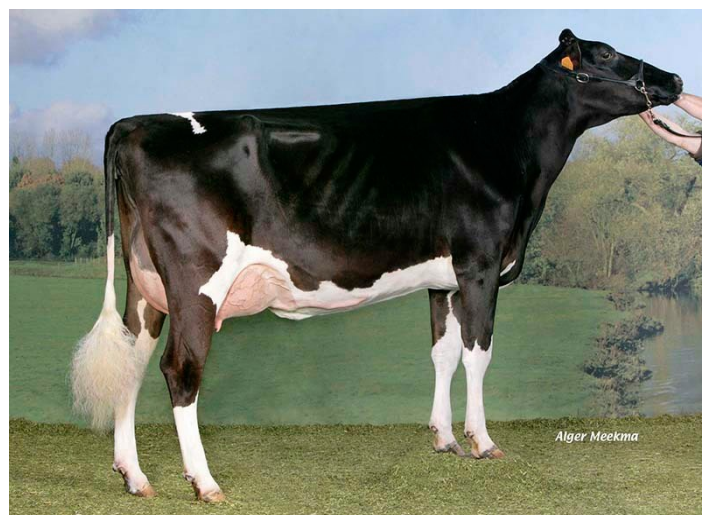
gRZKm	Calving maternal	Rel. 61%	110
--------------	------------------	----------	------------

Sire Fertility			-
-----------------------	--	--	----------

Linear Profile	88	100	112	124
Stature	small			tall 116
Dairy Character	tight rib			open rib 121
Body Depth	shallow			deep 104
Strength	frail			strong 96
Rump Angle	ascending			sloped 104
Rump Width	narrow			wide 108
Rear Leg Set Side View	posty			sickled 96
Foot Angle	low angle			steep 106
Hock Quality	swollen			dry 106
Rear Legs Rear View	hock-in			parallel 109
Locomotion	bad			good 111
Rear Udder Height	low			high 115
Suspensory Ligament	weak			strong 110
Teat Placement Front	wide			close 110
Teat Placement Rear	wide			close 103
Fore Udder Attachment	loose			tight 108
Udder Depth	deep			shallow 109
Teat Length	short			long 86



Granddam:
Wendland Holsteins Lucy



4th dam:
Bertaia Alexander Lidia