

MCDONALD-P-RED

250HO15525

HO840003201598569

APRILDAY MCDONALD-P-RED-ET PC TC TY TV TL TD HH1T HH2T HH3T HH4T HH5T HH6T

RONALD*RC X PAT-RED X CLARENCE*RC

Sire: TRENT-WAY-JS RONALD-ET

Dam: APRILDAY PAT MONIQUE-RED-ET GP-80

1-09 3X 278D 9435 kgM 4.5% 423 kgF 3.0% 286 kgP

MGS: COYNE-FARMS SYMPATI PAT-RED

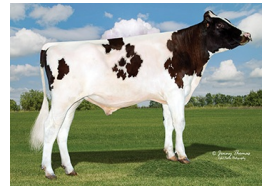
Born On: December 09, 2019

Beta-casein: A1A2

Kappa-casein: AB

EFI: 8.4%

aAa: 234



DAM Aprilday Pat Monique-Red-ET



INDEXES

TPI	2765
NM\$	609
CM\$	624
Feed Efficiency (\$)	117
Feed Saved	-157
HHP\$	736
DWP\$	550
WT\$	122
CW\$	2

DAUGHTER FERTILITY

Fertility Index/Rel. %	0.2
DPR/Rel. %	0.2/73
HCR/Rel. %	0.9/71
CCR/Rel. %	0.5/73

MANAGEMENT TRAITS

SCE/Rel. %	1.8/63
DCE/Rel. %	2.3/57
Gestation Length/Rel. %	-2.1/72
Early First Calving/Rel. %	-0.8/70
SSB/Rel. %	5.3/59
DSB/Rel. %	4.4/54
Productive Life/Rel. %	4.3/74
Livability/Rel. %	1.3/70
Residual Feed Intake/Rel. %	25/18
SCS/Rel. %	2.57/75
Milking Speed/Rel. %	100/73

SIRE FERTILITY

SCR/Rel. %

PRODUCTION

PTA Milk (lbs)	404
PTA Protein (lbs)	22
PTA Protein (%)	0.03
PTA Fat (lbs)	62
PTA Fat (%)	0.16
Production Reliability %	80
Dtrs/Herds	

TYPE

PTA Type	2.35
Udder Composite	2.74
Feet & Leg Composite	1.72
Body Weight Composite	0.87
Dairy Composite	0.40
Type Reliability %	78
Dtrs/Herds	

CDCB/HA TYPE TRAITS

Stature	short	1.96	tall
Strength	frail	0.69	strong
Body Depth	shallow	0.48	deep
Dairy Form	tight ribbed	0.68	open ribbed
Rump Width	narrow	1.20	wide
Rump Angle	high pins	-0.73	sloped
Rear Leg (side view)	posty	0.03	sickled
Rear Leg (rear view)	hock-in	2.11	straight
Foot Angle	low angle	2.51	steep angle
Feet & Leg Score	low	1.93	high
Fore Udder	loose	3.75	strong
Rear Udder Height	low	3.65	high
Rear Udder Width	narrow	3.06	wide
Udder Cleft	weak	0.34	strong
Udder Depth	deep	3.11	shallow
Front Teat Placement	wide	1.31	close
Rear Teat Placement	wide	0.85	close
Teat Length	short	-0.24	long

ZOETIS

WELLNESS TRAITS

CDCB

	Value	Rel. %		Value	Rel. %	
	106	45	Mastitis	2.5	68	
	99	45	Retained Placenta	0.5	58	
	101	44	Metritis	1.5	60	
	102	34	Hypocalcemia/Milk Fever	0.0	49	
	107	40	Ketosis	2.0	55	
	102	40	Displaced Abomasum	0.4	58	
	99	41	Lameness			
	101	36	Cow Respiratory Disease			
	96	31	Cow Abortion			
	92	41	Twinning			
	96	23	Cystic Ovary			
	N/A	N/A	Heifer Livability	0.90	54	
	93	33	Calf Respiratory Disease			
	99	39	Calf Scours			
	106	41	Calf Livability			

