

SELECT 7H014920

HO840003149135073

Born On: June 30, 2018
 Beta-casein: A1A2
 Kappa-casein: AE
 EFI: 8.3%
 aAa: 423



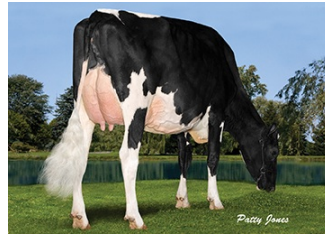
AVANT-GARDE UNIX SELECT-ET TR TP TC TY TV TL TD HH1T HH2T HH3T HH4T HH5T HH6T

UNIX X MCCUTCHEN X LAVANGUARD

Sire: CROTEAU LESPERRON UNIX
 Dam: WALNUTLAWN MCCUTCHEN SUMMER-ET EX-94
 1-10 2X 365D 12248 kgM 4.6% 561 kgF 3.1% 380 kgP
 MGS: DE-SU BKM MCCUTCHEN 1174-ET



DAM Walnutlawn McCutchen Summer



MGD Misty-Springs Lavanguard Sue

INDEXES

TPI	2335
NM\$	56
CM\$	65
Feed Efficiency (\$)	5
Feed Saved	-389
HHP\$	233
DWP\$	-77
WT\$	-52
CW\$	32

PRODUCTION

PTA Milk (lbs)	-411
PTA Protein (lbs)	-2
PTA Protein (%)	0.04
PTA Fat (lbs)	33
PTA Fat (%)	0.18
Production Reliability %	82
Dtrs/Herds	

TYPE

PTA Type	3.10
Udder Composite	2.56
Feet & Leg Composite	0.79
Body Weight Composite	2.65
Dairy Composite	2.09
Type Reliability %	80
Dtrs/Herds	

DAUGHTER FERTILITY

Fertility Index/Rel. %	-0.2
DPR/Rel. %	-0.6/77
HCR/Rel. %	0.0/74
CCR/Rel. %	-1.6/77

MANAGEMENT TRAITS

SCE/Rel. %	2.1/93
DCE/Rel. %	2.2/69
Gestation Length/Rel. %	0.2/76
Early First Calving/Rel. %	4.2/74
SSB/Rel. %	5.3/86
DSB/Rel. %	5.9/63
Productive Life/Rel. %	-0.4/78
Livability/Rel. %	-2.2/73
Residual Feed Intake/Rel. %	-13/23
SCS/Rel. %	2.83/79
Milking Speed/Rel. %	101/82

CDCB/HA TYPE TRAITS

Trait	Value	Rel. %	Target
Stature	short	3.82	tall
Strength	frail	2.54	strong
Body Depth	shallow	2.64	deep
Dairy Form	tight ribbed	1.57	open ribbed
Rump Width	narrow	2.76	wide
Rump Angle	high pins	0.01	sloped
Rear Leg (side view)	posty	0.41	sickled
Rear Leg (rear view)	hock-in	1.24	straight
Foot Angle	low angle	1.96	steep angle
Feet & Leg Score	low	1.60	high
Fore Udder	loose	3.89	strong
Rear Udder Height	low	3.35	high
Rear Udder Width	narrow	3.00	wide
Udder Cleft	weak	2.47	strong
Udder Depth	deep	3.63	shallow
Front Teat Placement	wide	1.93	close
Rear Teat Placement	wide	1.57	close
Teat Length	short	-0.73	long

SIRE FERTILITY

SCR/Rel. %	-0.9/95
------------	---------

ZOETIS

WELLNESS TRAITS

CDCB

Trait	Value	Rel. %	Value	Rel. %
Mastitis	102	52	1.8	72
Retained Placenta	102	53	-0.1	63
Metritis	95	51	-0.2	64
Hypocalcemia/Milk Fever	100	41	0.2	54
Ketosis	101	49	0.4	60
Displaced Abomasum	90	48	-0.4	63
Lameness	92	49		
Cow Respiratory Disease	101	45		
Cow Abortion	96	41		
Twinning	104	49		
Cystic Ovary	96	31		
Heifer Livability	N/A	N/A	1.20	58
Calf Respiratory Disease	98	42		
Calf Scours	108	42		
Calf Livability	105	48		