

551H003701 ARISTOCRAT

Reg: HO840003142041200
RHA: 99%

DOB: 07/13/2017
DMS: 234,246 aAa: 243 AE A1A2

Sexed **ULTRA 4M**

ULTRA Fertility

Conv.

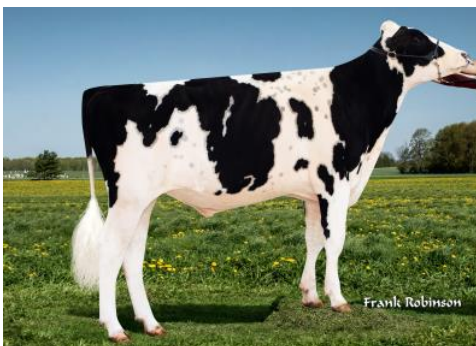
08/2021 CDCB SUMMARY GENOMIC				NM\$ +753
Milk	+1020	84%R	Fluid Merit \$	+708
Fat	+65	+0.09%	Cheese Merit \$	+763
Protein	+38	+0.02%	Grazing Merit \$	+658
SCS	2.68	78%R	Gestation Len. -1	Fert. Index -0.4
PL	+5.5	79%R	Livability +0.7	Mastitis +3.1
DPR	-1.2	78%R	EFI 9.5%	gEFI 11.1%
HCR	+0.7		gIB 15.5%	
CCR	-0.1		0 Dtrs 0 Herds	100% US

08/2021 CALVING SUMMARY				SCE 2.2 %
Sire Calving Ease	2.2%	93%R	778 Obs	
Daughter Calving Ease	1.8%	69%R	0 Obs	
Sire Stillbirth	5.9%	85%R	722 Obs	
Daughter Stillbirth	4.6%	64%R	0 Obs	

08/2021 HA TYPE SUMMARY				TPI +2764
PTAT +1.75	81%R	UDC+2.15	FLC+0.49	BSC +0.62
		0 D /	0 H	

			-2	-1	0	1	2
Stature	+1.30	Tall					
Strength	+0.45	Strong					
Body Depth	+0.23	Deep					
Dairy Form	+0.37	Open Rib					
Rump Angle	+0.11	Sloped					
Thurl Width	+0.87	Wide					
Rear Legs-Side	+0.39	Sickle					
Rear Legs-Rear	+0.44	Straight					
Foot Angle	+0.90	Steep					
Feet & Legs Score	+0.80	High					
F. Udder Attachment	+2.65	Strong					
Rear Udder Height	+2.55	High					
Rear Udder Width	+1.94	Wide					
Udder Cleft	+1.88	Strong					
Udder Depth	+2.63	Shallow					
Front Teat Placement	+1.68	Close					
Rear Teat P. Rear	+2.02	Close					
Teat Length	-0.90	Short					

Mr Frazzled Aristocrat-ET TC Frazzled x Monterey x Mogul



Sire: Melarry Josuper Frazzled-ET
Dam: Al-Lew Monterey Ashley 1346 EX-92

MGS: View-Home Monterey-ET
MGD: Al-Lew Mgl Astute 1207-ET VG-88

MGGS: Mountfield Ssi Dcy Mogul-ET TR TV TL TY TD
MGGD: Al-Lew Dmn Amazon 1059-ET EX-90



Dam: Al-Lew Monterey Ashley 1346 VG89



Mr Frazzled Aristocrat-ET



MGD: Al-Lew Mogul Astute VG88