

# RIVETING 14H014220

HO840003133120549

Born On: May 18, 2017  
 Beta-casein: A2A2  
 Kappa-casein: AA  
 aAa: 432

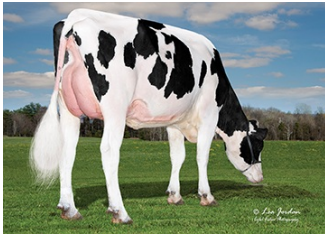


S-S-I BG FRZZLD RIVETING-ET TR TP TC TY TV TL TD HH1T HH2T HH3T HH4T HH5T HH6T

FRAZZLED X PROFIT X RODGERS

Sire: MELARRY JOSUPER FRAZZLED-ET  
 Dam: S-S-I PROFIT 10668 11643-ET VG-87  
 3-00 3X 365D 17704 kgM 4.2% 749 kgF 3.3% 584 kgP  
 MGS: S-S-I PARTYROCK PROFIT-ET

Daughter Average:  
 13689 kgM 577 kgF 4.20%F 440 kgP 3.20%P



S-S-I Duckett 1902-Grade



DAM S-S-I Profit 10668 11643-ET



DAM S-S-I Profit 10668 11643-ET

## INDEXES

TPI	2840
NM\$	881
CM\$	898
Feed Efficiency (\$)	159
Feed Saved	87
HHP\$	928
DWP\$	
WT\$	
CW\$	

## PRODUCTION

PTA Milk (lbs)	778
PTA Protein (lbs)	35
PTA Protein (%)	0.04
PTA Fat (lbs)	57
PTA Fat (%)	0.09
Production Reliability %	94
Dtrs/Herds	130/45

## TYPE

PTA Type	1.11
Udder Composite	1.53
Feet & Leg Composite	0.24
Body Weight Composite	-0.28
Dairy Composite	-0.43
Type Reliability %	91
Dtrs/Herds	51/17

## DAUGHTER FERTILITY

Fertility Index/Rel. %	2.4
DPR/Rel. %	1.6/81
HCR/Rel. %	3.7/88
CCR/Rel. %	2.2/81

## MANAGEMENT TRAITS

SCE/Rel. %	2.4/97
DCE/Rel. %	2.5/91
Gestation Length/Rel. %	-1.8/91
Early First Calving/Rel. %	6.8/74
SSB/Rel. %	5.4/93
DSB/Rel. %	4.1/90
Productive Life/Rel. %	7.5/85
Livability/Rel. %	3.7/79
Residual Feed Intake/Rel. %	-45/19
SCS/Rel. %	2.48/89
Milking Speed/Rel. %	

## SIRE FERTILITY

SCR/Rel. %	0.8/68
------------	--------

## CDCB/HA TYPE TRAITS

Trait	Value	Rel. %	Visual	Value	Rel. %
Stature	short	0.34	■	tall	
Strength	frail	-0.23	■	strong	
Body Depth	shallow	-0.59	■	deep	
Dairy Form	tight ribbed	0.22	■	open ribbed	
Rump Width	narrow	-0.24	■	wide	
Rump Angle	high pins	2.08	■	sloped	
Rear Leg (side view)	posty	-0.11	■	sickled	
Rear Leg (rear view)	hock-in	0.17	■	straight	
Foot Angle	low angle	0.03	■	steep angle	
Feet & Leg Score	low	0.35	■	high	
Fore Udder	loose	1.94	■	strong	
Rear Udder Height	low	1.97	■	high	
Rear Udder Width	narrow	1.35	■	wide	
Udder Cleft	weak	0.40	■	strong	
Udder Depth	deep	1.69	■	shallow	
Front Teat Placement	wide	0.83	■	close	
Rear Teat Placement	wide	0.71	■	close	
Teat Length	short	-1.28	■	long	

## ZOETIS

## WELLNESS TRAITS

## CDCB

	Value	Rel. %		Value	Rel. %
	N/A	N/A	Mastitis	3.8	72
	N/A	N/A	Retained Placenta	0.2	67
	N/A	N/A	Metritis	1.1	66
	N/A	N/A	Hypocalcemia/Milk Fever	0.0	57
	N/A	N/A	Ketosis	2.5	63
	N/A	N/A	Displaced Abomasum	1.1	65
	N/A	N/A	Lameness		
	N/A	N/A	Cow Respiratory Disease		
	N/A	N/A	Cow Abortion		
	N/A	N/A	Twinning		
	N/A	N/A	Cystic Ovary		
	N/A	N/A	Heifer Livability	1.80	59
	N/A	N/A	Calf Respiratory Disease		
	N/A	N/A	Calf Scours		
	N/A	N/A	Calf Livability		