

ROCKETFIRE

7H013454

HO840003129016236

S-S-I JOSUPER ROCKETFIRE-ET TR TP TC TY TV TL TD HH1T HH2T HH3T HH4T HH5T HH6T

JOSUPER X STERLING X ROBUST

Sire: UECKER SUPERSIRE JOSUPER-ET

Dam: S-S-I STRLNG TAYLOR 8728-ET

2-00 3X 263D 8414 kgM 2.7% 230 kgF 3.2% 270 kgP

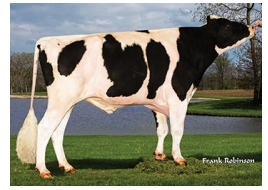
MGS: SANDY-VALLEY STERLING-ET

Born On: May 01, 2015

Beta-casein: A2A2

Kappa-casein: AB

aAa: 234165



Jenny-Lou Rocketfire 4624



West Wing Rocketfire 2122-Grade



S-S-I Rockfir 5033 8223-ET

INDEXES

TPI	2768
NM\$	826
CM\$	829
Feed Efficiency (\$)	207
Feed Saved	-146
HHP\$	871
DWP\$	
WT\$	
CW\$	

PRODUCTION

PTA Milk (lbs)	2540
PTA Protein (lbs)	76
PTA Protein (%)	-0.01
PTA Fat (lbs)	58
PTA Fat (%)	-0.13
Production Reliability %	98
Dtrs/Herds	390/103

TYPE

PTA Type	0.56
Udder Composite	0.72
Feet & Leg Composite	-0.62
Body Weight Composite	0.54
Dairy Composite	0.60
Type Reliability %	94
Dtrs/Herds	170/54

DAUGHTER FERTILITY

Fertility Index/Rel. %	0.1
DPR/Rel. %	-0.5/90
HCR/Rel. %	1.4/84
CCR/Rel. %	1.5/91

MANAGEMENT TRAITS

SCE/Rel. %	2.7/97
DCE/Rel. %	2.8/85
Gestation Length/Rel. %	-2.7/99
Early First Calving/Rel. %	1.8/85
SSB/Rel. %	6.1/94
DSB/Rel. %	4.7/80
Productive Life/Rel. %	5.4/91
Livability/Rel. %	2.7/79
Residual Feed Intake/Rel. %	65/26
SCS/Rel. %	2.85/95
Milking Speed/Rel. %	

CDCB/HA TYPE TRAITS

Stature	short		0.55	tall
Strength	frail		0.91	strong
Body Depth	shallow		0.25	deep
Dairy Form	tight ribbed		0.64	open ribbed
Rump Width	narrow		0.22	wide
Rump Angle	high pins		-0.58	sloped
Rear Leg (side view)	posty		0.44	sickled
Rear Leg (rear view)	hock-in		-0.65	straight
Foot Angle	low angle		-0.33	steep angle
Feet & Leg Score	low		-0.40	high
Fore Udder	loose		0.64	strong
Rear Udder Height	low		2.16	high
Rear Udder Width	narrow		2.79	wide
Udder Cleft	weak		-1.06	strong
Udder Depth	deep		-0.63	shallow
Front Teat Placement	wide		-1.75	close
Rear Teat Placement	wide		-1.55	close
Teat Length	short		0.75	long

SIRE FERTILITY

SCR/Rel. %	-0.6/99
------------	---------

ZOETIS

WELLNESS TRAITS

CDCB

	Value	Rel. %		Value	Rel. %	
	N/A	N/A	Mastitis	0.9	81	
	N/A	N/A	Retained Placenta	-0.2	72	
	N/A	N/A	Metritis	0.6	72	
	N/A	N/A	Hypocalcemia/Milk Fever	0.0	62	
	N/A	N/A	Ketosis	2.2	67	
	N/A	N/A	Displaced Abomasum	1.0	72	
	N/A	N/A	Lameness			
	N/A	N/A	Cow Respiratory Disease			
	N/A	N/A	Cow Abortion			
	N/A	N/A	Twinning			
	N/A	N/A	Cystic Ovary			
	N/A	N/A	Heifer Livability	1.70	63	
	N/A	N/A	Calf Respiratory Disease			
	N/A	N/A	Calf Scours			
	N/A	N/A	Calf Livability			

