



WOODCREST KING DOC TR TP TC TY TV TL TD HH1T HH2T HH3T HH4T HH5T HH6T  
 KINGBOY X MACK X SNOWMAN

Sire: MORNINGVIEW MCC KINGBOY-ET  
 Dam: WCD-ZBW MACK DADDY-ET VG-88  
 1-11 3X 365D 16969 kgM 3.1% 523 kgF 3.2% 539 kgP  
 MGS: COYNE-FARMS SROCK MACK-ET

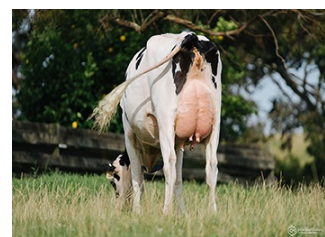
Daughter Average:  
 13669 kgM 548 kgF 4.00%F 431 kgP 3.20%P



NN King Doc Barcelona



S-S-I Doc Have Not 8784-ET



Rockstar WHPG Doc Ada

## INDEXES

TPI	2814
NM\$	572
CM\$	575
Feed Efficiency (\$)	189
Feed Saved	-193
HHP\$	587
DWP\$	
WT\$	
CW\$	

## PRODUCTION

PTA Milk (lbs)	1615
PTA Protein (lbs)	56
PTA Protein (%)	0.02
PTA Fat (lbs)	72
PTA Fat (%)	0.03
Production Reliability %	99
Dtrs/Herds	6113/1851

## TYPE

PTA Type	3.54
Udder Composite	2.42
Feet & Leg Composite	2.17
Body Weight Composite	1.06
Dairy Composite	2.69
Type Reliability %	99
Dtrs/Herds	2919/979

## DAUGHTER FERTILITY

Fertility Index/Rel. %	-1.1
DPR/Rel. %	-1.5/97
HCR/Rel. %	0.4/96
CCR/Rel. %	-1.6/96

## MANAGEMENT TRAITS

SCE/Rel. %	2.7/99
DCE/Rel. %	2.3/96
Gestation Length/Rel. %	1.0/99
Early First Calving/Rel. %	0.5/90
SSB/Rel. %	7.3/99
DSB/Rel. %	6.0/95
Productive Life/Rel. %	1.8/93
Livability/Rel. %	-3.2/78
Residual Feed Intake/Rel. %	31/24
SCS/Rel. %	3.07/99
Milking Speed/Rel. %	

## CDCB/HA TYPE TRAITS

Trait	Value	Rel. %	Visual	Value	Rel. %
Stature	short			3.29	tall
Strength	frail			2.14	strong
Body Depth	shallow			2.82	deep
Dairy Form	tight ribbed			3.86	open ribbed
Rump Width	narrow			2.09	wide
Rump Angle	high pins			0.18	sloped
Rear Leg (side view)	posty			1.20	sickled
Rear Leg (rear view)	hock-in			2.92	straight
Foot Angle	low angle			2.88	steep angle
Feet & Leg Score	low			2.67	high
Fore Udder	loose			2.87	strong
Rear Udder Height	low			3.83	high
Rear Udder Width	narrow			4.68	wide
Udder Cleft	weak			2.76	strong
Udder Depth	deep			1.08	shallow
Front Teat Placement	wide			1.94	close
Rear Teat Placement	wide			2.64	close
Teat Length	short			0.75	long

## SIRE FERTILITY

SCR/Rel. %	-0.8/99
------------	---------

## ZOETIS WELLNESS TRAITS CDCB

Trait	Value	Rel. %	Value	Rel. %
Mastitis	N/A	N/A	-1.2	89
Retained Placenta	N/A	N/A	0.2	82
Metritis	N/A	N/A	1.0	81
Hypocalcemia/Milk Fever	N/A	N/A	0.1	71
Ketosis	N/A	N/A	1.4	78
Displaced Abomasum	N/A	N/A	0.1	80
Lameness	N/A	N/A		
Cow Respiratory Disease	N/A	N/A		
Cow Abortion	N/A	N/A		
Twinning	N/A	N/A		
Cystic Ovary	N/A	N/A		
Heifer Livability	N/A	N/A	1.20	67
Calf Respiratory Disease	N/A	N/A		
Calf Scours	N/A	N/A		
Calf Livability	N/A	N/A		