

# 551HO03617 ALTITUDE-RED

Reg: HO840003128013348  
RHA: %

DOB: 03/14/2017  
DMS: 123,126 aAa: 234 AB A1A2 TE

EcoFeed@heifer: 91 - 78% R. Cow: 84 - 62% R.



Farnear Altitude-Red-ET TC TE  
Arvis\*RC x Mccutchen x Destry RC



08/2024 CDCB SUMMARY MACE				NM\$ -1	
Milk	+281	99%R	Cheese Merit \$	+5	
Fat	+17	+0.02%	Gestation Len. +2	MSP	+103
Protein	+18	+0.04%	EFI 8.4%	gEFI 9.7%	gIB 10.3%
CFP	+35		Mastitis -0.5	Fert. Index	-3.7
SCS	2.94	99%R	Livability -5.4	Heifer Liv.	+1.0
PL	+0.5	96%R	HCR -1.0	CCR	-4.5
DPR	-3.0	96%R	SCE +4.7	SSB	+7.6
RFI	+83		24895m 4.1%	1014f 3.3%	812p
Feed Saved	-363	54%R	2454 Dtrs	853 Herds	74% US



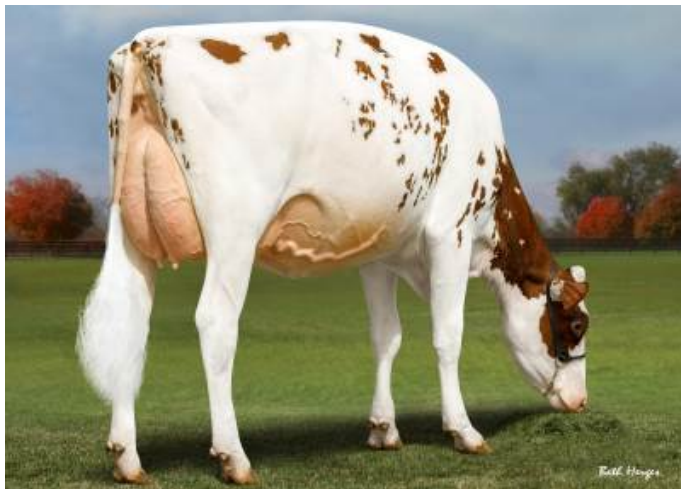
202407 ST TRAITS AND INDICES				Eco\$ 289	
Effective Milking Speed	+5.1	92%	EcoFeed Cow	+84	62%
Boxtime	+8.0	88%	EcoFeed Heifer	+91	78%
Milking Speed	+8.1	95%	Ecofeed Index	+84	68%
RCI	+4.6		Eco2		

**Sire:** Mr EDG Arvis 18196-ET RC TV TD TL  
**Dam:** Farnear Tbr Aria Adler-ET EX-96  
 02-03 2x 365d 32440m 5.0 1609f 3.4 1107p  
**MGS:** De-Su Bkm Mccutchen 1174-ET TV TL TY TD  
**MGD:** Ms Apples Aria-ET RC TV EX-92  
 03-10 3x 312d 29830m 4.8 1444f 3.4 1019p  
**MGGs:** Scientific Destry-ET RC TV TL TY VG-88  
**MGGD:** KHW Regiment Apple-Red-ET CV EX-96 3E DOM  
 09-01 2x 365d 36750m 4.3 1582f 3.3 1211p

08/2024 HA TYPE SUMMARY				TPI +2206				
PTAT +2.88 99%R UDC+2.52 FLC+1.44 BSC +1.85 1851 D / 754 H				-2	-1	0	1	2
Stature	+3.87	Tall						
Strength	+1.56	Strong						
Body Depth	+2.01	Deep						
Dairy Form	+1.38	Open Rib						
Rump Angle	+1.30	Sloped						
Thurl Width	+1.88	Wide						
Rear Legs-Side	+0.38	Sickle						
Rear Legs-Rear	+2.54	Straight						
Foot Angle	+2.75	Steep						
Feet & Legs Score	+2.00	High						
F. Udder Attachment	+3.38	Strong						
Rear Udder Height	+4.53	High						
Rear Udder Width	+3.50	Wide						
Udder Cleft	+1.69	Strong						
Udder Depth	+2.54	Shallow						
Front Teat Placement	+1.31	Close						
Rear Teat P. Rear	+1.39	Close						
Teat Length	+0.73	Long						



Daughter: Glaustar Majestic Altitude-Red VG-89-3YR-CAN



Daughter: Le-O-La Alt Destiny-Red-ET VG-89



Daughter: Ms Saturday VG-87-2YR