



SILVERRIDGE V IMAX  
 PINE-TREE 9882 PROF 7019 VG-86-4YR-USA  
 S-S-I PARTYROCK PROFIT  
 OCD SUPERSIRE 9882 VG-86-2YR-USA DOM  
 SEAGULL-BAY SUPERSIRE  
 OCD ROBUST SHIMMER EX-90-2E-USA DOM

**GTPI 3001**

VG-CAN TD TR TL TY MWT TV 99%-I HH1F HH2F HH3F HH4F HH5F HH6F HCDF HMWF

Reg. #: HOCANM12857690 aAa: 243156 DMS: 234  
 Born: 08/03/2017 Kappa Casein: AA Beta Casein: A1A2

**PRODUCTION** 1412 Herds 9911 Dtrs 99% Rel MACE-G / 08-24

Milk lbs <b>1669</b>	Fat lbs <b>81</b>	Fat % <b>+0.06</b>	Protein lbs <b>65</b>	Protein % <b>+0.05</b>
NM\$ <b>1045</b>	CM\$ <b>1056</b>	FM\$ <b>970</b>	GM\$ <b>962</b>	DWP\$ <b>828</b>
Feed Efficiency <b>265</b>	RFI <b>-301</b>	Feed Saved <b>237</b>	Methane Efficiency <b>98</b>	

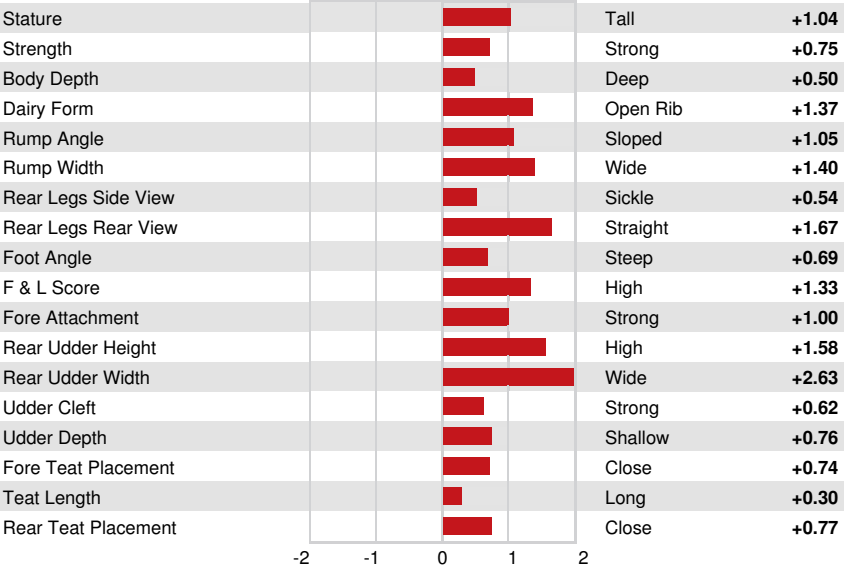
Daughter Average (ME) Milk **27,687 lbs** Fat **1,151 lbs** Protein **919 lbs**

**HEALTH & REPRODUCTION** Immunity **101**

Productive Life	<b>6.6</b>	Calf Immunity	<b>99</b>
Somatic Cell Score	<b>2.84</b>	Cow Conception Rate	<b>0.4</b>
Daughter Pregnancy Rate	<b>-1.0</b>	Heifer Conception Rate	<b>4.2</b>
Livability	<b>0.9</b>	Sire Calving Ease	<b>2.1%</b> 98% Rel
Heifer Livability	<b>0.3</b>	Daughter Calving Ease	<b>1.2%</b> 97% Rel
Fertility Index	<b>0.8</b>	Sire Stillbirth	<b>6.3%</b>
		Daughter Stillbirth	<b>3.5%</b>

**CONFORMATION** 788 Herds 3325 Dtrs 99% Rel MACE / 08-24

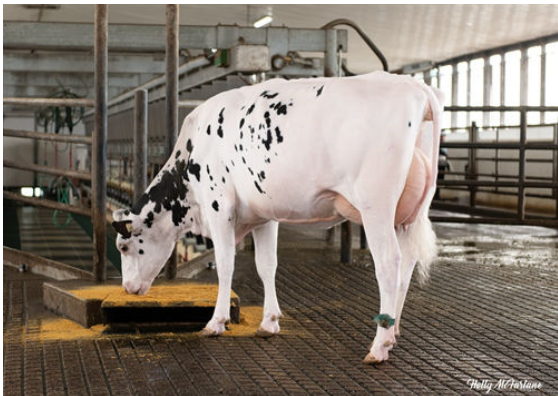
PTAT	<b>1.48</b>	Body Composite	<b>0.41</b>
Udder Composite	<b>1.24</b>	Dairy Composite	<b>1.00</b>
Feet & Legs Composite	<b>1.23</b>		



WESTCOAST PSUIT LAUMAB 8996  
 DAUGHTER



PROGENESIS PURSUIT DIETIES  
 DAUGHTER



STANTONS PURSUIT OF JUSTICE  
 DAUGHTER