

CASSIOPEIA

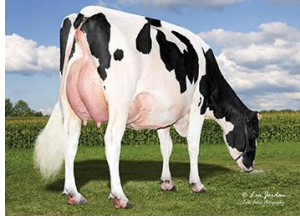
250HO17212
HO840003253836261

Born On: April 25, 2023
Beta-casein: A2A2
Kappa-casein: AB
EFI: 10.8%

S-S-I ZOAR CASSIOPEIA-ET TR TP TM TC TL TD TE HH1T HH2T HH3T HH4T HH5T HH6T

ZOAR X GAMEDAY X ZAREK

Sire: CLAYNOOK ZOAR
Dam: HORSENS S-S-I 4050 2589-ET
MGS: RMD-DOTTERER SSI GAMEDAY-ET



MGGD S-S-I Hor 11579 3344-ET

INDEXES

TPI	3254
NM\$	1158
CM\$	1181
Feed Efficiency (\$)	326
Feed Saved	54
HHP\$	1300
DWP\$	1129
WT\$	14
CW\$	1

PRODUCTION

PTA Milk (lbs)	1238
PTA Protein (lbs)	69
PTA Protein (%)	0.11
PTA Fat (lbs)	129
PTA Fat (%)	0.30
Production Reliability %	79
Dtrs/Herds	

TYPE

PTA Type	2.50
Udder Composite	2.13
Feet & Leg Composite	1.11
Body Weight Composite	0.38
Dairy Composite	1.18
Type Reliability %	79
Dtrs/Herds	

DAUGHTER FERTILITY

Fertility Index/Rel. %	0.3/74
DPR/Rel. %	-1.4/74
HCR/Rel. %	2.8/72
CCR/Rel. %	0.3/74

SIRE FERTILITY

SCR/Rel. %	
------------	--

MANAGEMENT TRAITS

SCE/Rel. %	2.4/63
DCE/Rel. %	2.8/57
Gestation Length/Rel. %	-0.3/72
Early First Calving/Rel. %	4.9/72
SSB/Rel. %	6.4/60
DSB/Rel. %	4.3/55
Productive Life/Rel. %	5.4/74
Livability/Rel. %	-0.2/71
Residual Feed Intake/Rel. %	-112/24
SCS/Rel. %	2.75/75
Milking Speed/Rel. %	102/75

CDCB/HA TYPE TRAITS

Stature	short	1.35	tall
Strength	frail	0.77	strong
Body Depth	shallow	0.77	deep
Dairy Form	tight ribbed	1.58	open ribbed
Rump Width	narrow	1.15	wide
Rump Angle	high pins	-0.89	sloped
Rear Leg (side view)	posty	0.75	sickled
Rear Leg (rear view)	hock-in	1.15	straight
Foot Angle	low angle	1.01	steep angle
Feet & Leg Score	low	1.40	high
Fore Udder	loose	3.14	strong
Rear Udder Height	low	2.63	high
Rear Udder Width	narrow	2.81	wide
Udder Cleft	weak	0.39	strong
Udder Depth	deep	1.95	shallow
Front Teat Placement	wide	1.16	close
Rear Teat Placement	wide	0.80	close
Teat Length	short	-0.83	long

ZOETIS

WELLNESS TRAITS

CDCB

	Value	Rel. %		Value	Rel. %
	101	53	Mastitis	3.5	71
	85	53	Retained Placenta	0	68
	96	50	Metritis	2	67
	100	44	Hypocalcemia/Milk Fever	0	58
	86	43	Ketosis	1.9	67
	99	41	Displaced Abomasum	0.6	70
	104	48	Lameness		
	97	42	Cow Respiratory Disease		
	91	34	Cow Abortion		
	102	49	Twinning		
	103	23	Cystic Ovary		
	N/A	N/A	Heifer Livability	0.4	60
	104	40	Calf Respiratory Disease		
	102	43	Calf Scours		
	96	45	Calf Livability		