

CONWAY 14H015223

HO840003148929379

SANDY-VALLEY R CONWAY-ET TR TP TC TY TV TL TD TE HH1T HH2T HH3T HH4T HH5T HH6T
 RENEGADE X GRANITE X DRACO

Born On: March 18, 2019
 Beta-casein: A2A2
 Kappa-casein: BB
 EFl: 10.0%
 aAa: 243

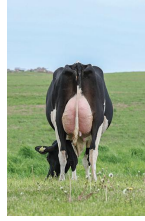


Sire: S-S-I PR RENEGADE-ET
 Dam: SANDY-VALLEY COTTON-ET GP-82
 1-11 2X 180D 6,314 kgM 270 kgF 200 kgP
 MGS: PROGENESIS GRANITE

Daughter Average:
 12,098 kgM 558 kgF 4.60%F 416 kgP 3.40%P



Siemers Cway Paris 36932



Siemers Cway Paris 36932



Siemers Conway Daughter Group

INDEXES

TPI	2962
NM\$	863
CM\$	887
Feed Efficiency (\$)	281
Feed Saved	7
HHP\$	1081
DWP\$	873
WT\$	-38
CW\$	-15

PRODUCTION

PTA Milk (lbs)	447
PTA Protein (lbs)	59
PTA Protein (%)	0.17
PTA Fat (lbs)	115
PTA Fat (%)	0.38
Production Reliability %	99
Dtrs/Herds	6479/395

TYPE

PTA Type	1.90
Udder Composite	1.15
Feet & Leg Composite	1.28
Body Weight Composite	0.32
Dairy Composite	1.18
Type Reliability %	99
Dtrs/Herds	1803/181

DAUGHTER FERTILITY

Fertility Index/Rel. %	-0.3/98
DPR/Rel. %	-1.0/98
HCR/Rel. %	-0.3/97
CCR/Rel. %	0.5/97

SIRE FERTILITY

SCR/Rel. %	-2.8/98
------------	---------

MANAGEMENT TRAITS

SCE/Rel. %	2.4/99
DCE/Rel. %	1.9/98
Gestation Length/Rel. %	0.0/99
Early First Calving/Rel. %	-0.4/94
SSB/Rel. %	7.2/98
DSB/Rel. %	4.3/97
Productive Life/Rel. %	2.3/94
Livability/Rel. %	-1.4/86
Residual Feed Intake/Rel. %	-56/26
SCS/Rel. %	3.06/99
Milking Speed/Rel. %	93/90

CDCB/HA TYPE TRAITS

Stature	short	1.48	tall
Strength	frail	0.74	strong
Body Depth	shallow	1.19	deep
Dairy Form	tight ribbed	1.66	open ribbed
Rump Width	narrow	0.76	wide
Rump Angle	high pins	-0.15	sloped
Rear Leg (side view)	posty	1.92	sickled
Rear Leg (rear view)	hock-in	1.86	straight
Foot Angle	low angle	0.69	steep angle
Feet & Leg Score	low	1.54	high
Fore Udder	loose	2.19	strong
Rear Udder Height	low	1.70	high
Rear Udder Width	narrow	1.32	wide
Udder Cleft	weak	0.11	strong
Udder Depth	deep	1.34	shallow
Front Teat Placement	wide	0.45	close
Rear Teat Placement	wide	0.05	close
Teat Length	short	0.03	long

ZOETIS WELLNESS TRAITS CDCB

	Value	Rel. %		Value	Rel. %
	99	93	Mastitis	3	93
	98	95	Retained Placenta	-0.1	94
	107	95	Metritis	2.1	94
	99	90	Hypocalcemia/Milk Fever	0.1	81
	100	92	Ketosis	2.6	91
	93	90	Displaced Abomasum	0.1	95
	95	89	Lameness		
	97	90	Cow Respiratory Disease		
	98	83	Cow Abortion		
	104	95	Twinning		
	97	65	Cystic Ovary		
	N/A	N/A	Heifer Livability	-0.3	81
	96	93	Calf Respiratory Disease		
	109	94	Calf Scours		
	89	95	Calf Livability		