

HANTASTIC-P

250HO17297

HO840003257574503

Born On: March 20, 2023

Beta-casein: A2A2

Kappa-casein: BB

EF1: 9.9%

aAa: 234

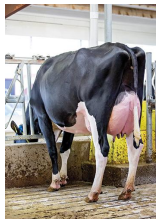
SIEMERS HANTASTIC-P-ET TR PC TM TC TL TD TE HH1T HH2T HH3T HH4T HH5T HH6T

CHEW-P X PERFECT X LUSTER-P

Sire: PENN-ENGLAND CHEW-P-ET

Dam: SIEMERS PAR HANAN 36296-ET

MGS: SIEMERS RENGD PERFECT-ET



DAM Siemers Par Hanan 36296-ET



MGD Siemers Lstr Hanan 33317-ET



MGGD Siemers Doc Hanan 28286-ET

INDEXES

TPI	3072
NM\$	827
CM\$	839
Feed Efficiency (\$)	228
Feed Saved	-204
HHP\$	945
DWP\$	881
WT\$	9
CW\$	-9

PRODUCTION

PTA Milk (lbs)	1169
PTA Protein (lbs)	59
PTA Protein (%)	0.08
PTA Fat (lbs)	95
PTA Fat (%)	0.19
Production Reliability %	80
Dtrs/Herds	

TYPE

PTA Type	3.30
Udder Composite	2.59
Feet & Leg Composite	2.09
Body Weight Composite	0.75
Dairy Composite	2.08
Type Reliability %	79
Dtrs/Herds	

DAUGHTER FERTILITY

Fertility Index/Rel. %	0.4/74
DPR/Rel. %	-0.2/74
HCR/Rel. %	0.6/72
CCR/Rel. %	1.0/74

SIRE FERTILITY

SCR/Rel. %	
------------	--

MANAGEMENT TRAITS

SCE/Rel. %	2.6/63
DCE/Rel. %	1.7/57
Gestation Length/Rel. %	0.3/72
Early First Calving/Rel. %	0.2/72
SSB/Rel. %	6.3/60
DSB/Rel. %	4.7/55
Productive Life/Rel. %	3.8/74
Livability/Rel. %	0.2/71
Residual Feed Intake/Rel. %	91/23
SCS/Rel. %	3.03/75
Milking Speed/Rel. %	104/76

CDCB/HA TYPE TRAITS

Stature	short	2.61	tall
Strength	frail	1.28	strong
Body Depth	shallow	1.88	deep
Dairy Form	tight ribbed	3.27	open ribbed
Rump Width	narrow	3.62	wide
Rump Angle	high pins	-0.31	sloped
Rear Leg (side view)	posty	1.92	sickled
Rear Leg (rear view)	hock-in	3.07	straight
Foot Angle	low angle	1.43	steep angle
Feet & Leg Score	low	2.48	high
Fore Udder	loose	2.68	strong
Rear Udder Height	low	3.84	high
Rear Udder Width	narrow	3.98	wide
Udder Cleft	weak	2.98	strong
Udder Depth	deep	1.91	shallow
Front Teat Placement	wide	1.86	close
Rear Teat Placement	wide	2.79	close
Teat Length	short	0.80	long

ZOETIS

WELLNESS TRAITS

CDCB

	Value	Rel. %		Value	Rel. %
	100	46	Mastitis	1.2	71
	102	46	Retained Placenta	0.3	67
	108	43	Metritis	2.2	67
	103	36	Hypocalcemia/Milk Fever	0.1	57
	102	35	Ketosis	1.7	66
	98	34	Displaced Abomasum	0.8	70
	95	41	Lameness		
	97	35	Cow Respiratory Disease		
	106	28	Cow Abortion		
	104	42	Twinning		
	104	15	Cystic Ovary		
	N/A	N/A	Heifer Livability	-0.2	59
	96	34	Calf Respiratory Disease		
	107	38	Calf Scours		
	93	40	Calf Livability		