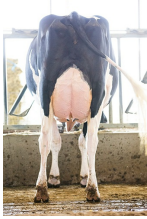




SIEMERS RZ PAZZLE 34954-ET TR TP TC TY TV TL TD TE HH1T HH2T HH3T HH4T HH5T HH6T

ROZLINE X DELTA-LAMBDA X DENVER

Sire: SIEMERS RENEGADE ROZLINE-ET
Dam: SIEMERS LMDA PARIS 27856-ET EX-91
3-05 2X 365D 17,500 kgM 4.1% 716 kgF 3.5% 618 kgP
MGS: FARNEAR DELTA-LAMBDA-ET



DAM Siemers Lmda Paris 27856-ET



MGD Siemers Denver Paris-ET



MGGD Quality Tango Paris

INDEXES

TPI	3047
NM\$	838
CM\$	860
Feed Efficiency (\$)	231
Feed Saved	-63
HHP\$	1064
DWP\$	835
WT\$	64
CW\$	-68

PRODUCTION

PTA Milk (lbs)	658
PTA Protein (lbs)	51
PTA Protein (%)	0.12
PTA Fat (lbs)	96
PTA Fat (%)	0.27
Production Reliability %	83
Dtrs/Herds	

TYPE

PTA Type	3.15
Udder Composite	2.70
Feet & Leg Composite	1.92
Body Weight Composite	1.54
Dairy Composite	1.57
Type Reliability %	82
Dtrs/Herds	

DAUGHTER FERTILITY

Fertility Index/Rel. %	0.2/79
DPR/Rel. %	-0.4/79
HCR/Rel. %	1.6/79
CCR/Rel. %	0.6/79

SIRE FERTILITY

SCR/Rel. %	-0.5/97
------------	---------

MANAGEMENT TRAITS

SCE/Rel. %	2.5/98
DCE/Rel. %	2.5/70
Gestation Length/Rel. %	-0.2/77
Early First Calving/Rel. %	-0.9/74
SSB/Rel. %	5.6/96
DSB/Rel. %	5.5/64
Productive Life/Rel. %	4.1/79
Livability/Rel. %	-2.1/73
Residual Feed Intake/Rel. %	-170/27
SCS/Rel. %	2.78/81
Milking Speed/Rel. %	102/80

CDCB/HA TYPE TRAITS

Stature	short	1.63	tall
Strength	frail	1.87	strong
Body Depth	shallow	1.76	deep
Dairy Form	tight ribbed	1.46	open ribbed
Rump Width	narrow	2.13	wide
Rump Angle	high pins	-0.98	sloped
Rear Leg (side view)	posty	-0.94	sickled
Rear Leg (rear view)	hock-in	2.74	straight
Foot Angle	low angle	2.73	steep angle
Feet & Leg Score	low	1.92	high
Fore Udder	loose	3.32	strong
Rear Udder Height	low	3.72	high
Rear Udder Width	narrow	3.69	wide
Udder Cleft	weak	1.52	strong
Udder Depth	deep	1.91	shallow
Front Teat Placement	wide	1.48	close
Rear Teat Placement	wide	1.48	close
Teat Length	short	0.78	long

ZOETIS WELLNESS TRAITS CDCB

	Value	Rel. %		Value	Rel. %
	104	57	Mastitis	3.1	74
	103	58	Retained Placenta	-0.2	71
	102	55	Metritis	2	70
	102	46	Hypocalcemia/Milk Fever	0	61
	104	48	Ketosis	2.8	70
	101	49	Displaced Abomasum	1	74
	95	52	Lameness		
	98	47	Cow Respiratory Disease		
	103	38	Cow Abortion		
	103	55	Twinning		
	107	26	Cystic Ovary		
	N/A	N/A	Heifer Livability	-0.3	63
	93	51	Calf Respiratory Disease		
	100	80	Calf Scours		
	86	57	Calf Livability		