



PROGENESIS TOPNOTCH
 SILVERRIDGE V DUKE EMAIL EX-90-7YR-CAN 7*
 S-S-I MONTROSS DUKE
 SILVERRIDGE V SSHOT EARRING EX-90-6YR-CAN 10*
 COGENT SUPERSHOT
 SILVERRIDGE V MUNITION EARWIG EX-90-5E-CAN 5*

GTPI 3121

TD TM TR TL TY MWT TV 99%-I HH1F HH2F HH3F HH4F HH5F HH6F HCDF HMWF

Reg. #: HOCANM12857528 aAa: 534126 DMS: 345
 Born: 04/18/2018 Kappa Casein: AB Beta Casein: A2A2

PRODUCTION 696 Herds 3798 Dtrs 99% Rel MACE-G / 08-24

Milk lbs 1465	Fat lbs 115	Fat % +0.22	Protein lbs 69	Protein % +0.08
NM\$ 1011	CM\$ 1033	FM\$ 882	GM\$ 969	DWP\$ 926
Feed Efficiency 271	RFI 93	Feed Saved -253	Methane Efficiency 106	

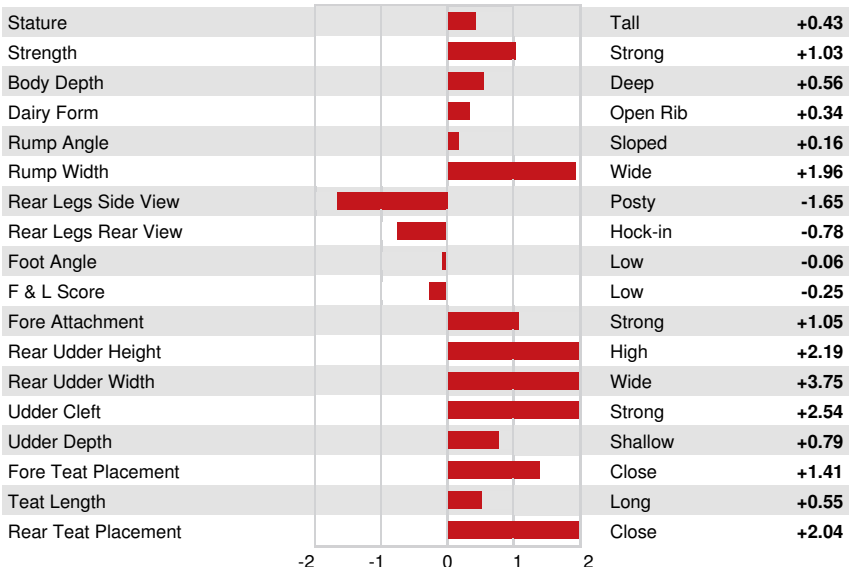
Daughter Average (ME) Milk **27,408 lbs** Fat **1,200 lbs** Protein **918 lbs**

HEALTH & REPRODUCTION Immunity **109**

Productive Life	5.2	Calf Immunity	103
Somatic Cell Score	2.62	Cow Conception Rate	2.3
Daughter Pregnancy Rate	0.1	Heifer Conception Rate	1.9
Livability	0.0	Sire Calving Ease	2.3% 98% Rel
Heifer Livability	0.3	Daughter Calving Ease	2.1% 97% Rel
Fertility Index	1.5	Sire Stillbirth	6.7%
		Daughter Stillbirth	5.2%

CONFORMATION 449 Herds 1898 Dtrs 98% Rel MACE / 08-24

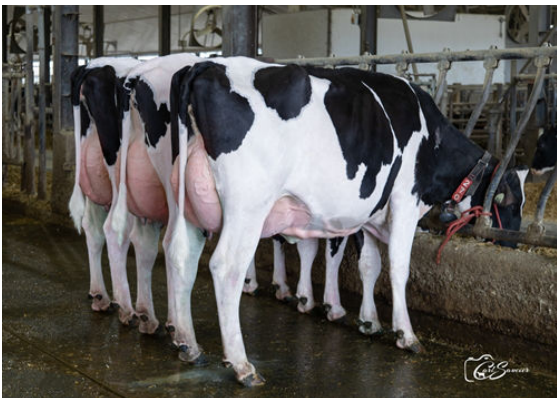
PTAT	1.21	Body Composite	1.06
Udder Composite	2.00	Dairy Composite	0.43
Feet & Legs Composite	-0.54		



PROGENESIS EINSTEIN WIMZY
 DAUGHTER



HAH ALICE
 DAUGHTER



EINSTEIN DAUGHTER GROUP

L to R - BEAUCOISE EINSTEIN ELIAS, BEAUCOISE EINSTEIN PIKKY,
 BEAUCOISE EINSTEIN PIRKI