

551H004449 REDLEA*RC

Reg: HO840003213134224
RHA: %

DOB: 12/04/2020
DMS: 345,234 aAa: 135 AB A2A2 TE

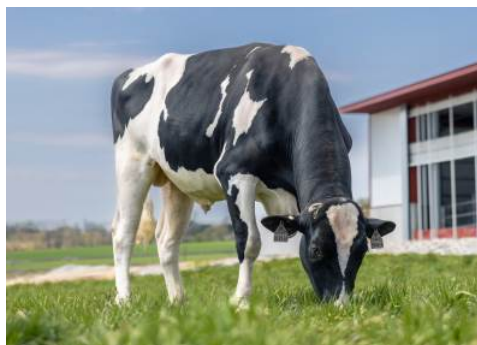
EcoFeed@heifer: 100 - 65% R. Cow: 111 - 51% R.



Stgen RC Redlea-ET RC TC TE
Captain x Salvatore RC x Delta



08/2024 CDCB SUMMARY GENOMIC				NM\$ +1161	
Milk	+1693	82%R	Cheese Merit \$	+1176	
Fat	+116	+0.19%	Gestation Len. -2	MSP	+95
Protein	+73	+0.07%	EFI 10.0%	gEFI 10.6%	gIB 12.3%
CFP	+189		Mastitis +2.8	Fert. Index	+0.6
SCS	2.82	78%R	Livability -0.2	Heifer Liv.	+0.4
PL	+5.2	77%R	HCR +1.6	CCR	+0.1
DPR	-0.3	77%R	SCE +2.2	SSB	+5.4
RFI	-65				
Feed Saved	+283	46%R	0 Dtrs	0 Herds	100% US



202407 ST TRAITS AND INDICES				Eco\$ 1144	
Effective Milking Speed	+4.9	80%	EcoFeed Cow	+111	51%
Boxtime	+8.7	73%	EcoFeed Heifer	+100	65%
Milking Speed	+7.8	85%	Ecofeed Index	+109	56%
RCI	+5.0		Eco2		

Sire: Genosource Captain-ET TL TD TV
Dam: HO840003213133800

MGS: Mr Salvatore RC-ET
MGD: Fairmont Delta Dalliah

MGGS: Mr Mogul Delta 1427-ET
MGGD: Fairmont Jacey Darlene
02-00 3x 281d 22530m 4.0 895f 3.2 717p

08/2024 HA TYPE SUMMARY				TPI +3133	
PTAT	+1.65	81%R	UDC+1.50	FLC+0.72	BSC -1.43
			0 D	0 H	

Stature	+0.37	Tall			
Strength	-0.83	Frail			
Body Depth	-0.35	Shallow			
Dairy Form	+2.22	Open Rib			
Rump Angle	-0.88	High Pins			
Thurl Width	+0.88	Wide			
Rear Legs-Side	+0.82	Sickle			
Rear Legs-Rear	+0.48	Straight			
Foot Angle	+0.11	Steep			
Feet & Legs Score	+0.89	High			
F. Udder Attachment	+1.18	Strong			
Rear Udder Height	+2.43	High			
Rear Udder Width	+2.46	Wide			
Udder Cleft	+0.36	Strong			
Udder Depth	+0.67	Shallow			
Front Teat Placement	-0.15	Wide			
Rear Teat P. Rear	-0.04	Wide			
Teat Length	+0.09	Long			



Dam: Fairmont Salvatore Doris-ET