

LEGENDAIRY

7H016491
H0840003245704322

Born On: November 16, 2021
Beta-casein: A2A2
Kappa-casein: AB
EF1: 9.4%
aAa: 342

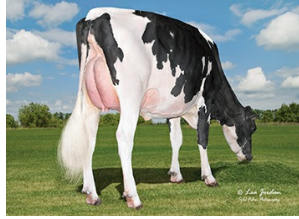
TOWNLINEACRE LEGENDAIRY-ET TR TP TC TY TV TL TD TE HH1T HH2T HH3T HH4T HH5T HH6T

HOMECOMING X DOC X DOORMAN

Sire: AOT HOMECOMING-ET
Dam: TOWNLINEACRE KING DOC LENA
MGS: WOODCREST KING DOC



DAM Townlineacre King Doc Lena



DAM Townlineacre King Doc Lena

INDEXES

TPI	2620
NM\$	375
CM\$	380
Feed Efficiency (\$)	95
Feed Saved	-185
HHP\$	419
DWP\$	322
WT\$	-75
CW\$	16

PRODUCTION

PTA Milk (lbs)	578
PTA Protein (lbs)	28
PTA Protein (%)	0.04
PTA Fat (lbs)	43
PTA Fat (%)	0.08
Production Reliability %	81
Dtrs/Herds	

TYPE

PTA Type	3.39
Udder Composite	2.60
Feet & Leg Composite	1.29
Body Weight Composite	1.61
Dairy Composite	2.57
Type Reliability %	80
Dtrs/Herds	

DAUGHTER FERTILITY

Fertility Index/Rel. %	1.0/75
DPR/Rel. %	0.2/75
HCR/Rel. %	3.2/75
CCR/Rel. %	0.8/75

SIRE FERTILITY

SCR/Rel. %	1.6/84
------------	--------

MANAGEMENT TRAITS

SCE/Rel. %	2.5/85
DCE/Rel. %	2.4/71
Gestation Length/Rel. %	0.2/73
Early First Calving/Rel. %	2.3/73
SSB/Rel. %	6.0/77
DSB/Rel. %	5.8/65
Productive Life/Rel. %	1.9/76
Livability/Rel. %	-1.1/73
Residual Feed Intake/Rel. %	-59/26
SCS/Rel. %	3.08/78
Milking Speed/Rel. %	106/79

CDCB/HA TYPE TRAITS

Stature	short	3.21	tall
Strength	frail	2.21	strong
Body Depth	shallow	2.97	deep
Dairy Form	tight ribbed	3.05	open ribbed
Rump Width	narrow	2.80	wide
Rump Angle	high pins	0.20	sloped
Rear Leg (side view)	posty	0.98	sickled
Rear Leg (rear view)	hock-in	1.60	straight
Foot Angle	low angle	2.04	steep angle
Feet & Leg Score	low	1.96	high
Fore Udder	loose	3.56	strong
Rear Udder Height	low	3.50	high
Rear Udder Width	narrow	3.58	wide
Udder Cleft	weak	2.61	strong
Udder Depth	deep	2.40	shallow
Front Teat Placement	wide	2.63	close
Rear Teat Placement	wide	2.80	close
Teat Length	short	0.11	long

ZOETIS

WELLNESS TRAITS

CDCB

	Value	Rel. %		Value	Rel. %
	99	53	Mastitis	0.2	72
	96	54	Retained Placenta	-0.9	69
	97	51	Metritis	-0.1	68
	96	46	Hypocalcemia/Milk Fever	0	59
	98	44	Ketosis	0.4	68
	100	42	Displaced Abomasum	0	71
	96	49	Lameness		
	92	42	Cow Respiratory Disease		
	106	36	Cow Abortion		
	100	50	Twinning		
	97	24	Cystic Ovary		
	N/A	N/A	Heifer Livability	0.6	61
	105	45	Calf Respiratory Disease		
	101	45	Calf Scours		
	101	50	Calf Livability		