

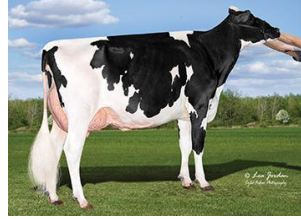
TOWNLINEACRE LOCKSMITH-ET TR TP TM TC TL TD TE HH1T HH2T HH3T HH4T HH5T HH6T

## PAZZLE X DOC X DOORMAN

Sire: SIEMERS RZ PAZZLE 34954-ET  
Dam: TOWNLINEACRE KING DOC LENA  
MGS: WOODCREST KING DOC



DAM Townlineacre King Doc Lena



DAM Townlineacre King Doc Lena

### INDEXES

TPI	2647
NM\$	384
CM\$	394
Feed Efficiency (\$)	93
Feed Saved	-302
HHP\$	540
DWP\$	218
WT\$	-123
CW\$	-19

### PRODUCTION

PTA Milk (lbs)	599
PTA Protein (lbs)	34
PTA Protein (%)	0.06
PTA Fat (lbs)	43
PTA Fat (%)	0.08
Production Reliability %	79
Dtrs/Herds	

### TYPE

PTA Type	3.53
Udder Composite	2.61
Feet & Leg Composite	1.67
Body Weight Composite	2.21
Dairy Composite	2.41
Type Reliability %	79
Dtrs/Herds	

### DAUGHTER FERTILITY

Fertility Index/Rel. %	-0.4/74
DPR/Rel. %	-0.6/74
HCR/Rel. %	0.6/72
CCR/Rel. %	-0.1/74

### SIRE FERTILITY

SCR/Rel. %	
------------	--

### MANAGEMENT TRAITS

SCE/Rel. %	3.2/63
DCE/Rel. %	2.5/57
Gestation Length/Rel. %	0.9/73
Early First Calving/Rel. %	-1.7/72
SSB/Rel. %	6.6/60
DSB/Rel. %	5.7/55
Productive Life/Rel. %	2.6/75
Livability/Rel. %	-1.6/72
Residual Feed Intake/Rel. %	-33/25
SCS/Rel. %	2.92/76
Milking Speed/Rel. %	99/76

### CDCB/HA TYPE TRAITS

Stature	short	3.17	tall
Strength	frail	2.57	strong
Body Depth	shallow	2.69	deep
Dairy Form	tight ribbed	2.15	open ribbed
Rump Width	narrow	2.50	wide
Rump Angle	high pins	-0.02	sloped
Rear Leg (side view)	posty	-0.21	sickled
Rear Leg (rear view)	hock-in	2.41	straight
Foot Angle	low angle	2.89	steep angle
Feet & Leg Score	low	2.11	high
Fore Udder	loose	3.49	strong
Rear Udder Height	low	3.87	high
Rear Udder Width	narrow	3.90	wide
Udder Cleft	weak	2.02	strong
Udder Depth	deep	2.27	shallow
Front Teat Placement	wide	1.68	close
Rear Teat Placement	wide	1.91	close
Teat Length	short	0.61	long

### ZOETIS

### WELLNESS TRAITS

### CDCB

	Value	Rel. %		Value	Rel. %	
	94	52	Mastitis	0.7	71	
	104	52	Retained Placenta	0.1	68	
	101	49	Metritis	1	67	
	102	43	Hypocalcemia/Milk Fever	0.2	58	
	101	41	Ketosis	1.9	67	
	101	41	Displaced Abomasum	0.5	71	
	96	47	Lameness			
	93	41	Cow Respiratory Disease			
	103	34	Cow Abortion			
	103	48	Twinning			
	104	22	Cystic Ovary			
	N/A	N/A	Heifer Livability	0.3	60	
	97	39	Calf Respiratory Disease			
	104	45	Calf Scours			
	93	45	Calf Livability			