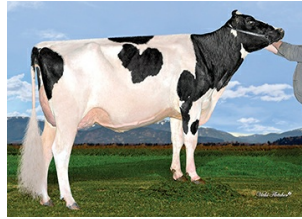




WESTCOAST GD BLAKELY-ET TR TP TC TY TV TL TD TE HH1T HH2T HH3T HH4T HH5T HH6T

GAMEDAY X POPSTAR X TOPNOTCH

Sire: RMD-DOTTERER SSI GAMEDAY-ET
Dam: WESTCOAST POPSTR SIL6827 8977
MGS: PROGENESIS POPSTAR



DAM Westcoast Popstr SIL6827

INDEXES

TPI	3112
NM\$	946
CM\$	968
Feed Efficiency (\$)	232
Feed Saved	-148
HHP\$	1096
DWP\$	910
WT\$	4
CW\$	35

PRODUCTION

PTA Milk (lbs)	779
PTA Protein (lbs)	49
PTA Protein (%)	0.09
PTA Fat (lbs)	105
PTA Fat (%)	0.29
Production Reliability %	82
Dtrs/Herds	

TYPE

PTA Type	2.84
Udder Composite	2.83
Feet & Leg Composite	0.32
Body Weight Composite	0.99
Dairy Composite	1.52
Type Reliability %	80
Dtrs/Herds	

DAUGHTER FERTILITY

Fertility Index/Rel. %	1.2/77
DPR/Rel. %	-0.3/77
HCR/Rel. %	2.8/76
CCR/Rel. %	1.5/77

SIRE FERTILITY

SCR/Rel. %	-0.1/76
------------	---------

MANAGEMENT TRAITS

SCE/Rel. %	2.6/88
DCE/Rel. %	2.7/70
Gestation Length/Rel. %	-1.0/75
Early First Calving/Rel. %	3.9/74
SSB/Rel. %	6.3/74
DSB/Rel. %	4.4/64
Productive Life/Rel. %	5.4/77
Livability/Rel. %	0.4/73
Residual Feed Intake/Rel. %	-2/26
SCS/Rel. %	2.61/78
Milking Speed/Rel. %	106/77

CDCB/HA TYPE TRAITS

Stature	short	2.81	tall
Strength	frail	1.05	strong
Body Depth	shallow	1.24	deep
Dairy Form	tight ribbed	2.07	open ribbed
Rump Width	narrow	2.70	wide
Rump Angle	high pins	0.97	sloped
Rear Leg (side view)	posty	0.25	sickled
Rear Leg (rear view)	hock-in	0.19	straight
Foot Angle	low angle	1.20	steep angle
Feet & Leg Score	low	1.07	high
Fore Udder	loose	3.46	strong
Rear Udder Height	low	3.88	high
Rear Udder Width	narrow	3.79	wide
Udder Cleft	weak	1.67	strong
Udder Depth	deep	3.14	shallow
Front Teat Placement	wide	1.49	close
Rear Teat Placement	wide	1.52	close
Teat Length	short	-0.49	long

ZOETIS

WELLNESS TRAITS

CDCB

	Value	Rel. %		Value	Rel. %
	99	59	Mastitis	2.8	73
	95	60	Retained Placenta	0.1	71
	105	58	Metritis	2.4	70
	97	52	Hypocalcemia/Milk Fever	-0.1	60
	103	51	Ketosis	2.1	69
	97	49	Displaced Abomasum	0.2	73
	99	55	Lameness		
	97	48	Cow Respiratory Disease		
	98	41	Cow Abortion		
	94	57	Twinning		
	102	29	Cystic Ovary		
	N/A	N/A	Heifer Livability	1.7	62
	107	49	Calf Respiratory Disease		
	102	49	Calf Scours		
	104	53	Calf Livability		